
**Optimizing Regional Assessments
to Advance Learning:
The Southeast Asia
Primary Learning Metrics
(SEA-PLM) Programme**

What is SEA-PLM?

Southeast Asia Primary Learning Metrics (SEA-PLM) is a **regional large-scale student learning assessment and capacity-building programme** designed by and for Southeast Asian countries.

The Three Pillars of SEA-PLM Programme



1 *Generate comparative data, indicators, and analysis on learning outcomes and context*



2 *Strengthen collaboration and exchange*



3 *Promote and improve the technical capacity and the use of evidence*

Contribution to regional growth and development

- Anchored on **SEAMEO Education 7 Priority Areas 2021-2030**
- Aligns with **ASEAN Education Work Plan 2021-2025**
- Accelerates **Sustainable Development Goal 4 (4.1 and 4.7)**
- Promotes **ASEAN values and identities**



Robust regional and international collaboration and partnership

Inclusion in the Joint Communique of the 57th ASEAN Foreign Ministers Meeting



“Emphasising the importance of prioritising educational quality within ASEAN, we looked forward to the outcomes of the regional Southeast Asia Primary Learning Metrics (SEA-PLM) main survey and encouraged all ASEAN Member States to participate in the assessment.”

Pillar 1: SEA-PLM 2024 Main Survey Outcomes (rounded)

<i>Country</i>	<i>Primary eligible schools</i>	<i>G5 student-eligible cohort</i>	<i>Main sample target participation - intended</i>	<i>Sub-sample options</i>
Cambodia	5,700	299,200	5,189 students 195 schools/class	Convenient sub sample of 50 MLE schools settings, in Khmer
Lao PDR	8,700	135,600	4,033 students 208 schools/class	N/A
Malaysia	7,600	453,900	4,091 students 159 schools/class	N/A
Myanmar (minus 5 States)	17,000	403,600	4,090 students 197 schools/class	N/A
Philippines	36,400	2,532,200	4,092 students 162 schools/class	Filipino – 25% students more
Timor Leste	1,100	31,700	4,088 students 171 schools/class	Portuguese – 25% students more
Viet Nam	14,500	2,297,000	4,131 students 153 schools/class	N/A
Total	91,000 schools	6,153,200 students	29,714 students	



Developed **192** cognitive test booklets and **47** contextual questionnaires translated in **11** national languages

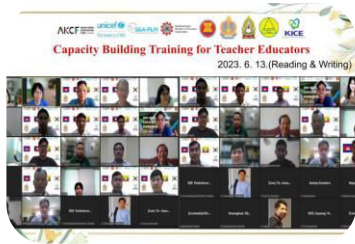
Pillar 2 and 3: Peer learning and Capacity Building

Capacity-building Workshops with KICE

12-15 June, 27 and 29 June | Virtual
9-10 November 2023 | Seoul, South Korea

Study Fellowship Programme by KEDI

6-10 and 20-24 March 2023 | Seoul, South Korea



Cambodia



Lao PDR



Myanmar



Pillar 2 and 3: Regional-level knowledge products to inform policy and practice in basic education



Upcoming Policy Brief:

- Optimizing Learning through Multi-Level Equity Lens: Evidence from the SEA-PLM 2019

How do SEA countries use SEA-PLM evidence to transform basic education systems?



**Research and
Communication**



Policy Reforms



**Interventions/
Proof-of-concepts**

Research and Communication



Countries have developed their own SEA-PLM country reports to generate national-level insights that can inform policies and practices in basic education.

Research and Communication

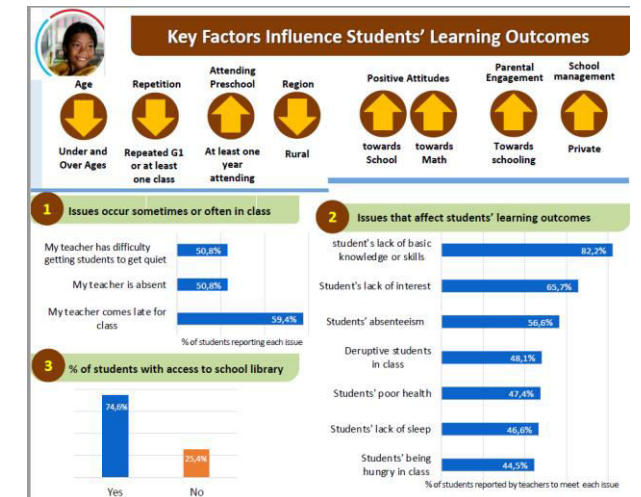
Countries have conducted series of dissemination activities to communicate on the SEA-PLM 2019 results from central offices down to local stakeholders



ILSA dashboard developed by MOE Malaysia featuring assessment results including SEA-PLM



SEA-PLM dissemination activity in 2021 in Vietnam



SEA-PLM 2019 Flyer from Cambodia

Policy Reforms

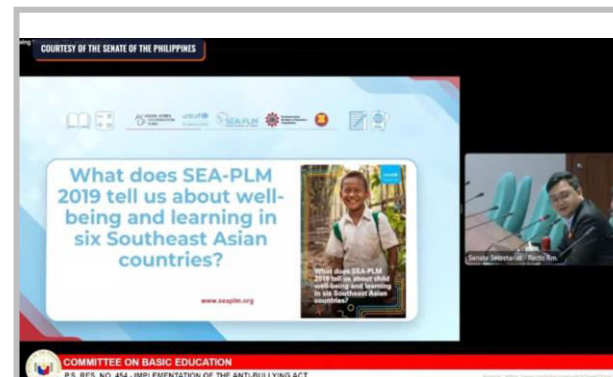
SEA-PLM has influenced policy initiatives and actions in participating countries, leading to legislative reforms, policy decisions, and effective implementations.

10-point policy response from MoE Cambodia

- ✓ Support teacher training
- ✓ Improve teacher skills & career path
- ✓ Increase pre-schools
- ✓ Improve quality of pre-schools
- ✓ Boost learning hours and skills on writing
- ✓ Align textbooks with concept- based curriculum and GC
- ✓ Enhance school-based management
- ✓ Promote parent & local involvement
- ✓ Advance child-friendly schools
- ✓ Enhance school facilities



SEA-PLM results served as a crucial resource in various curriculum reforms (e.g. curriculum evaluation in Myanmar, MATATAG curriculum in PH)



SEA-PLM results informed the Philippine Senate Committee on Basic Education hearing on the **review of the Anti-Bullying Act of 2013**



Interventions

Countries have implemented interventions to link SEA-PLM approach, methodology, and results with school-/classroom-level practice

- **Recalibration of reading programmes at the early levels** to strengthen reading skills in the classroom (e.g. Catch-up Fridays in PH)
- **Capacity building of teachers** to train on development of classroom-level assessments using SEA-PLM framework, approach, and style. (e.g. Nationwide training in VNM)
- **Integration of SEA-PLM concepts and frameworks** in school examinations to increase students' familiarity on SEA-PLM item styles and format (e.g. Integration project in Lao PDR)

Beyond data: Initiative 2 “Evidence-to-Policy linkages”

- Introduce a new, optional component to **transform SEA-PLM evidence into actionable policies and practices** at the sub-regional and national levels.
- Enhance the **visibility and impact of SEA-PLM** by:
 - Strengthening national and sub-national capacities to use evidence for policy transformation.
 - Advancing student learning outcomes and equity in foundational education.
- Expand **beyond standard SEA-PLM data and reports**.
- Foster **in-country dialogue, regional peer learning, and collaboration** across key areas such as data use, policy development, research, implementation, and monitoring.



“By and For Southeast Asian Countries”

Connect with us:

www.seaplms.org

secretariat@seaplms.org

 SEA-PLM

 @SEAPLM_S