



Education
Data and
Statistics
Commission

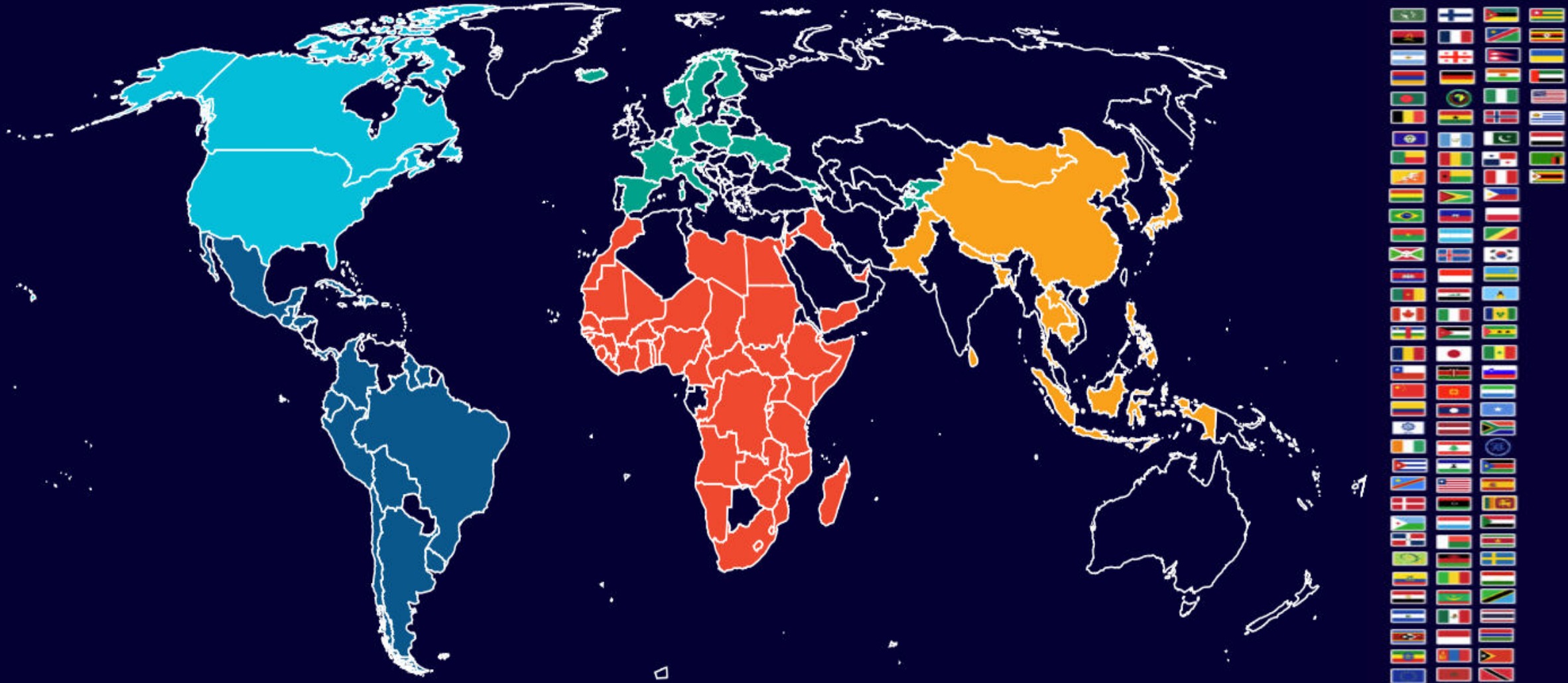


SDG4 School Meals Coverage Indicator

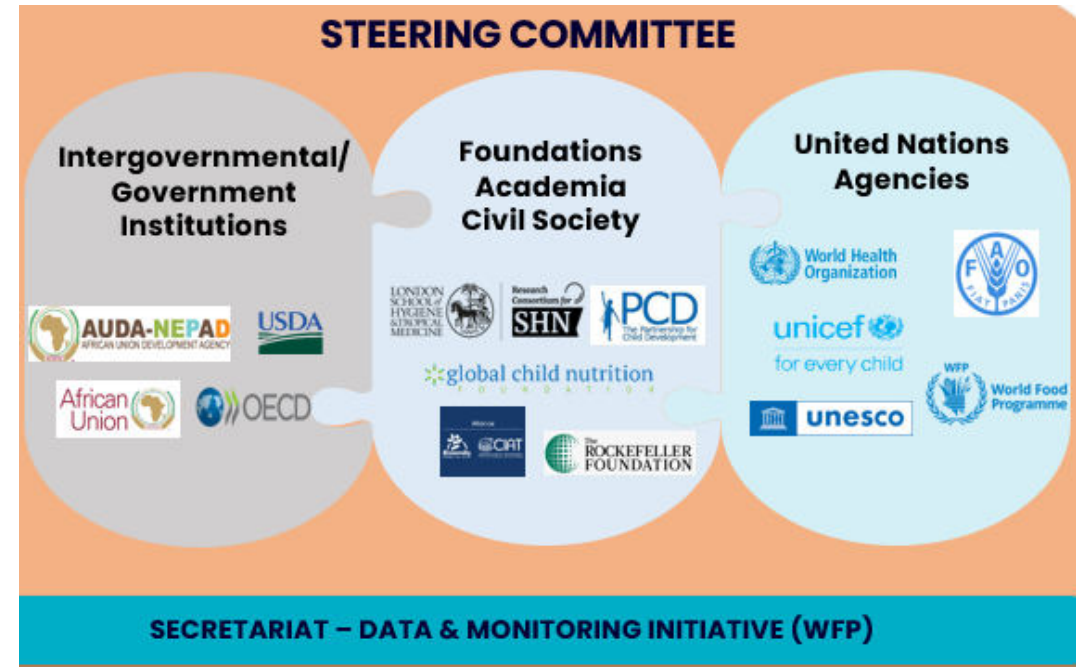
February 27, 2025

#25YearsOfDataInsights

School Meals Coalition: Global Commitment to Expand School Meals Programmes



Data and Monitoring Initiative (DMI)



Data and Monitoring Initiative (DMI)

Goal: Improve the availability and accessibility of high-quality data on national school meals programs and complementary activities worldwide to promote evidence-based decision-making and actions for school-aged children.

- **Objective 1:** Propose the **adoption of a new SDG4 target and indicator** to measure coverage of school meals globally
- **Objective 2:** Establish a **core set of indicators** on school meals and complementary activities with clear guidelines and promote their universal adoption by governments
- **Objective 3:** Create and maintain a **global database** as trusted public good, ensuring that data on school meals is stored, shared, and easily accessible to stakeholders worldwide
- **Objective 4:** **Support governments** in systematically collecting, validating, and reporting high-quality data on school meal programme

School Meals Coverage Indicator: Key Milestones

- **Helsinki Declaration (2022):** School Meals Coalition Ministerial Taskforce supports the inclusion of school meals coverage indicator under SDG 4: Quality Education framework
“The current Task Force members are the African Union, Brazil, Finland, France, Guatemala, Honduras, Japan, Kenya, Rwanda, Senegal, Sweden, USA”
- **Technical Cooperation Group** on SDG 4 Indicators approves the proposal for new indicator on School Meals (2023)
- **Extensive consultation process** with UNESCO-UIS team & Members of SMC Data and Monitoring Initiative
- **Submission of the metadata and methodological note** to UNESCO UIS (November 2024)

Proposed Target and Indicator

SDG4 goal : Ensure inclusive and equitable quality education and promote lifelong learning opportunities for all

Target: By 2030, ensure that all children have the opportunity to receive a safe, healthy, nutritious meal in schools

Indicator: Proportion of primary school children receiving school meals (coverage)

Definition: Proportion of school-enrolled children receiving school meals in primary schools (coverage)

Definition of Key Concepts

School meals: The provision of food (meals, snacks or take-home incentives) to children through school-based programmes on a regular basis during the school year

School-enrolled children (primary): Individuals officially registered in a given educational programme, or stage or module thereof, regardless of age

Methodology for Calculation

Indicator: Proportion of school children receiving school meals.

$$C_i = \frac{B_i}{P_i} * 100$$

C_i: School feeding coverage rate in primary schools in country i

B_i: Number of children receiving school feeding in primary schools in country i, for a given year

P_i: Total number of children enrolled in primary schools of country i, for the same year

Data Interpretation and Disaggregation

- Coverage estimates range between 0 and 100 percent
- A higher value for the indicator denotes a higher number of children enrolled in primary education receiving school feeding at school

Data Sources

Numerator: Number of children receiving school feeding in primary schools in a given year.

- Official and publicly available reports from governments on national school feeding programmes
- Global Survey of School Meal Programmes (GCNF 2018, 2020, 2023)

Denominator: Total number of children enrolled in primary schools in the same year.

- UNESCO Institute for Statistic
- No other substitute, if data not available the coverage is not calculated for that given country

Methodology for Data Collection (Numerator)

Desk review of official data sources:

- Government reports
- Publications
- National databases from national statistics institutes or ministries of education
- Most up-to-date and accurate information available

Global Survey of School Meal programs:

- Data collected every 2 years
- Designated Focal Points

Quality Assurance

Number of children receiving school feeding in primary schools:

- GCNF data quality assurance
- DMI quality assurance

Total number of children enrolled in primary schools:

- UNESCO UIS data quality assurance

Limitations

- Lack of disaggregated data by school levels (pre-primary/primary/secondary)
- Frequency of data collection (currently conducted every two years)

THANK YOU

Learn more:

[Data and Monitoring Initiative |
School Meals Coalition](#)

Contact us:

SMC.DataMonitoring@wfp.org

Learn more:

uis.unesco.org

databrowser.uis.unesco.org

[@UNESCOstat](#)

#25YearsOfDataInsights