

**CALCULATION OF EDUCATION INDICATORS
BASED ON HOUSEHOLD SURVEY DATA:
GRAPHIC SUMMARY**

**United Nations Economic Commission for
Latin America and the Caribbean (ECLAC)¹**

**TCG 9 Joint Working Group
on EMIS and Household Surveys**

22 November 2022

¹ Prepared by Miguel Castillo, consultant, under the supervision of Xavier Mancero, Chief of the Social Statistics Unit, Statistics Division, ECLAC

UNITED NATIONS ECONOMIC COMMISSION FOR
LATIN AMERICA AND THE CARIBBEAN (ECLAC)

STATISTICS DIVISION

CALCULATION OF EDUCATION INDICATORS
BASED ON HOUSEHOLD SURVEY DATA
GRAPHIC SUMMARY

Prepared by Miguel Castillo, consultant, under the supervision of Xavier Mancero,
Chief of the Social Statistics Unit, Statistics Division, ECLAC.

January 9, 2023

Contents

1	Introduction	2
2	Generated Indicators	2
2.1	Adjusted net attendance rate (ANAR)	2
2.2	Total net attendance rate (TNAR)	3
2.3	Net attendance rate (NAR)	5
2.4	Out-of-school rate (1 year before primary, primary education, lower secondary education, upper secondary education)	7
2.5	Completion rate (primary education, lower secondary education, upper secondary education)	9
2.6	Gross enrolment ratio for tertiary education	11
2.7	Participation rate in organized learning (one year before the official primary entry age)	12
A	Appendix	14
A.1	Information about educational cycles	14
A.2	Availability of information on sampling design	15
A.3	Data sources	16

1 Introduction

This report presents a summary of the indicators calculated using ECLAC's Household Repository (BADEHOG), updated to include data from 2021. The list of indicators includes:

- Attendance rates (Adjusted, Total and Net) by level of education (ISCED 1, 2 and 3).
- Out-of-school rate by level of education (ISCED 1, 2 and 3).
- Completion rates (CR) by level of education (ISCED 1, ISCED 2 and ISCED 3).
- Gross enrolment ratio for tertiary education.
- Participation rate in organized learning one year before the official primary entry age.

This summary presents data at the national level. The accompanying Excel files include the data disaggregated by sex, income quintiles and geographical area, with the corresponding adjusted parity indexes.

Data corresponds to the period 2000-2021 and to the following countries: Argentina, Bolivia, Brazil, Chile, Colombia, Costa Rica, Dominican Republic, Ecuador, El Salvador, Guatemala, Honduras, Mexico, Nicaragua, Panama, Paraguay, Peru, Uruguay and Venezuela.

2 Generated Indicators

2.1 Adjusted net attendance rate (ANAR)

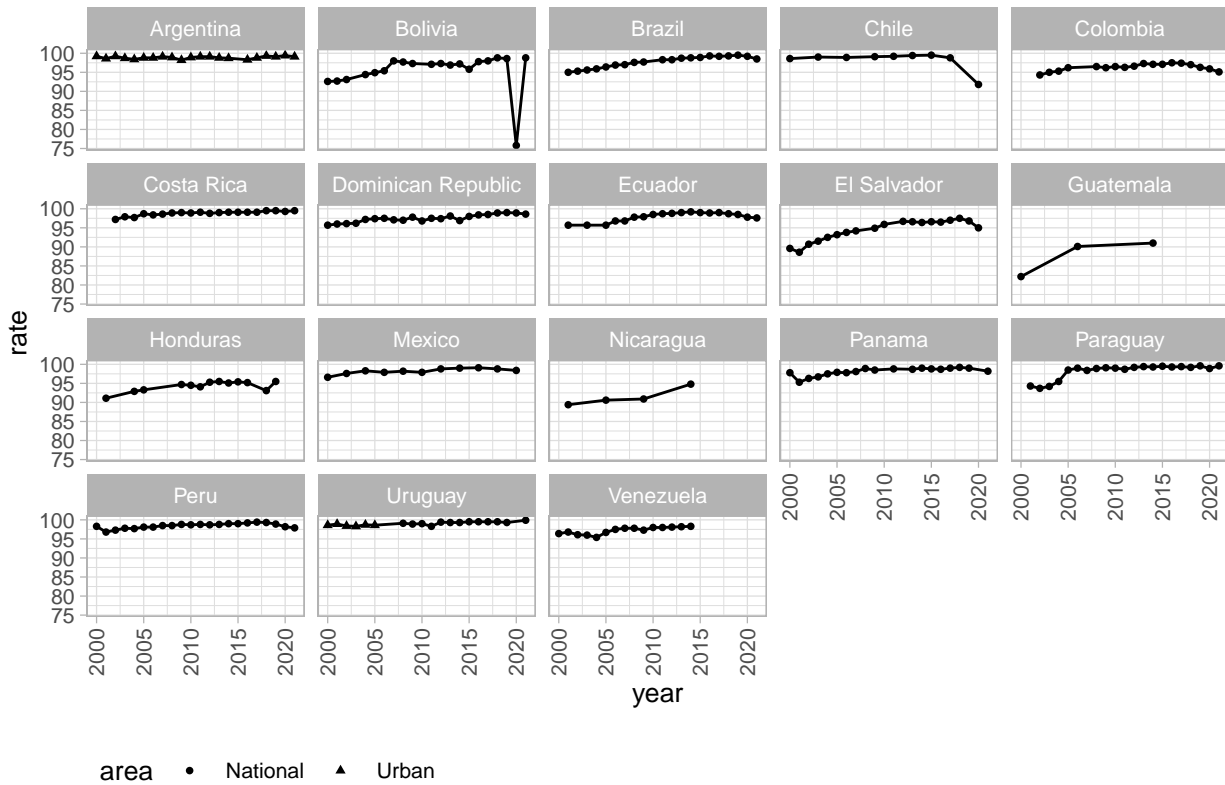
Definition: Total number of students in the theoretical age group for a given level of education attending that level or higher at any time during the reference academic year, expressed as a percentage of the total population in that age group.

$$ANAR_{h+}^t = \frac{A_{h+,a}^t}{P_{h+,a}^t} * 100$$

Where:

- NAR_{h+}^t = Net attendance rate for level of education **h** or higher (**h+**) in school year **t**
- $A_{h+,a}^t$ = Number of students of age group **a** attending level of education **h** or higher (**h+**) in school year **t**
- $P_{h+,a}^t$ = Population in age group **a** that officially corresponds to level of education **h** or higher (**h+**) in school year **t**

Adjusted net attendance rate by country



2.2 Total net attendance rate (TNAR)

Definition: Total number of students of the official age group for a given level of education who are attending school at any level of education, expressed as a percentage of the corresponding population.

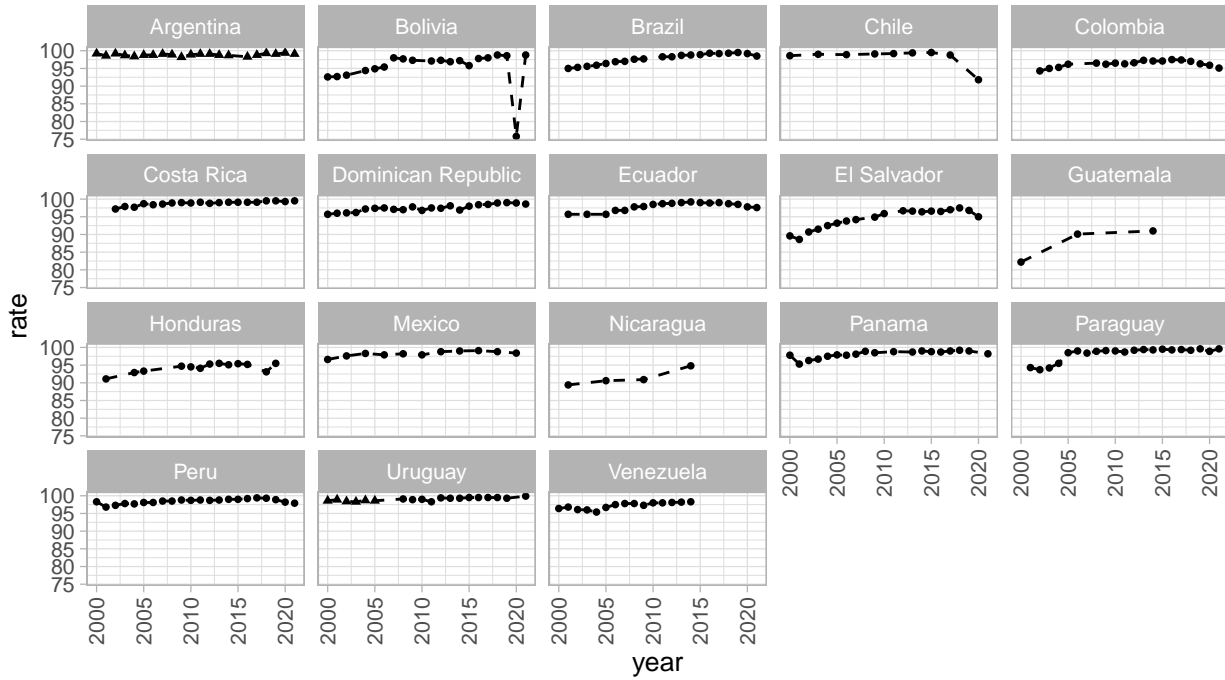
$$TNAR^t = \frac{A_a^t}{P_a^t} * 100$$

Where:

- $TNAR_h^t$ = Total net attendance rate for level of education **h** in school year **t**
- A_a^t = Number of students of age group **a** attending at any level of education in school year **t**
- P_a^t = Population in age group **a** in school year **t**

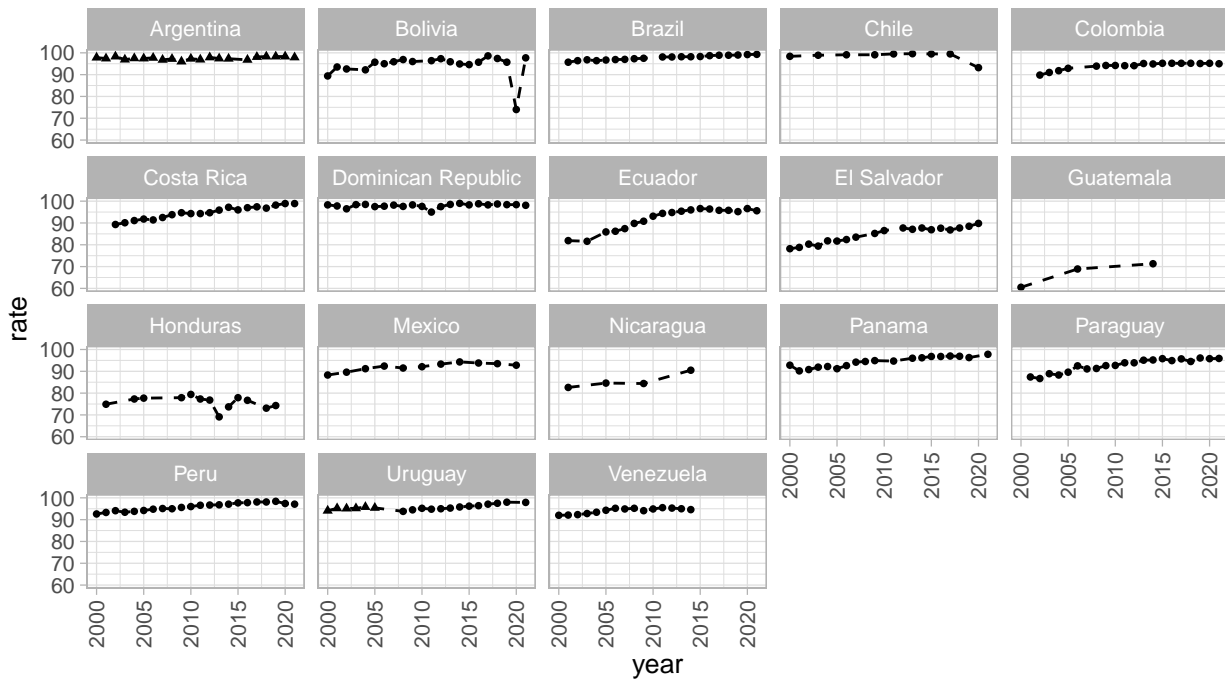
Note: The age group is defined by the ISCED classification.

Total net attendance rate by country
ISCED 1



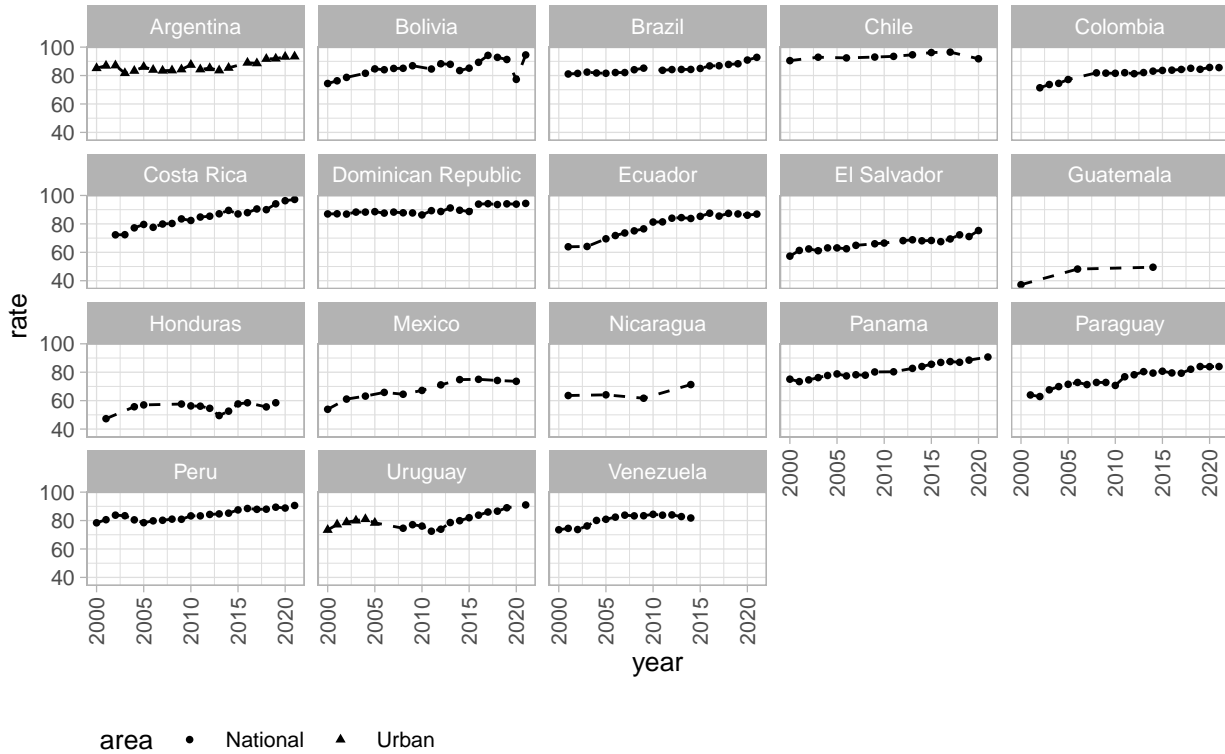
area • National ▲ Urban

Total net attendance rate by country
ISCED 2



area • National ▲ Urban

Total net attendance rate by country
ISCED 3



2.3 Net attendance rate (NAR)

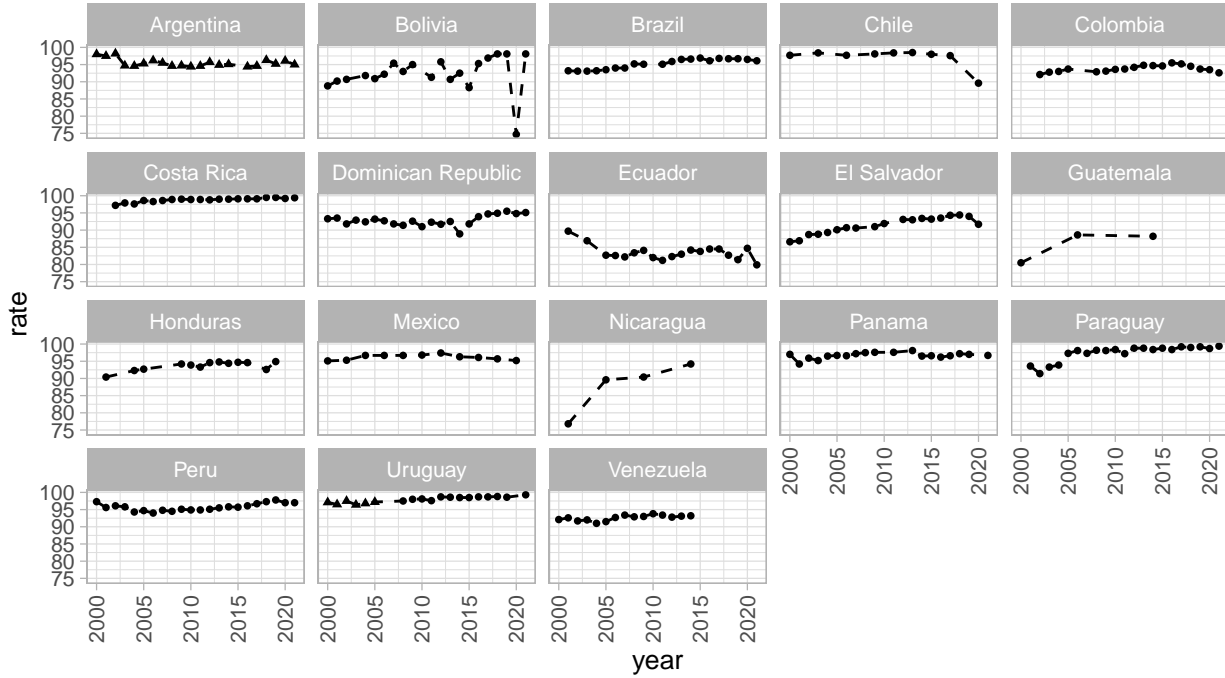
Definition: Total number of students in the theoretical age group for a given level of education attending that level at any time during the reference academic year, expressed as a percentage of the total population in that age group.

$$NAR_h^t = \frac{A_{h,a}^t}{P_{h,a}^t} * 100$$

Where:

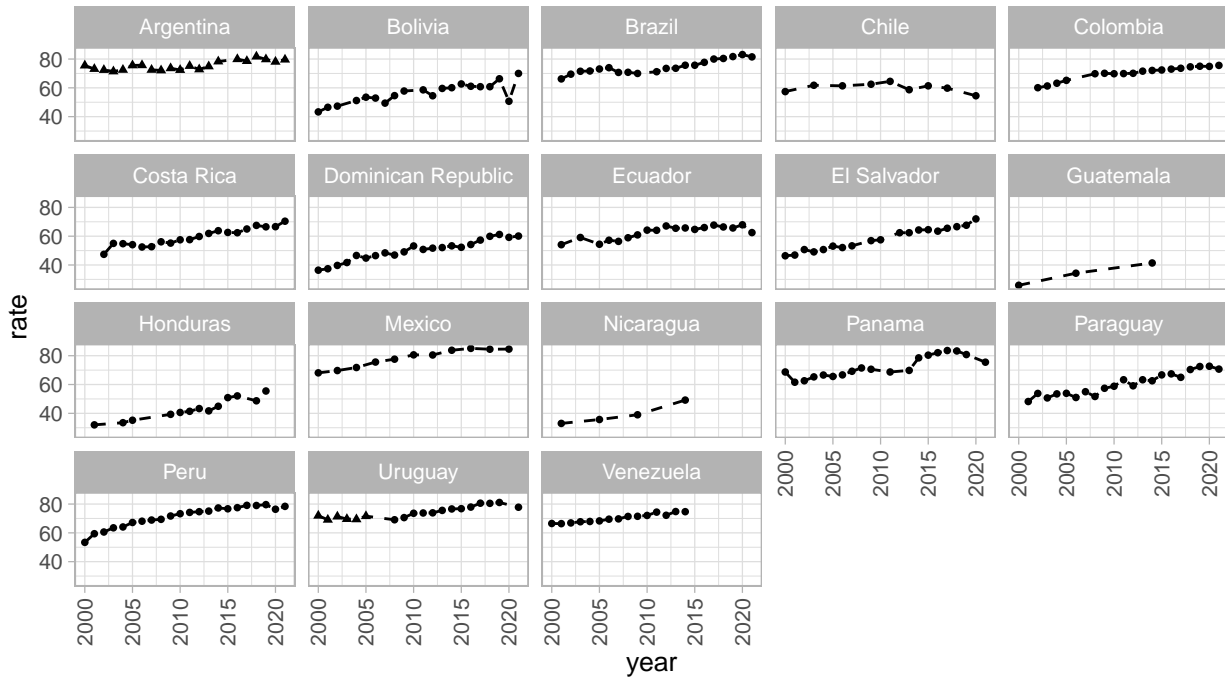
- NAR_h^t = Net attendance rate for level of education **h** in school year **t**
- $A_{h,a}^t$ = Number of students of age group **a** attending level of education **h** in school year **t**
- $P_{h,a}^t$ = Population in age group **a** that officially corresponds to level of education **h** in school year **t**

Net attendance rate by country
ISCED 1



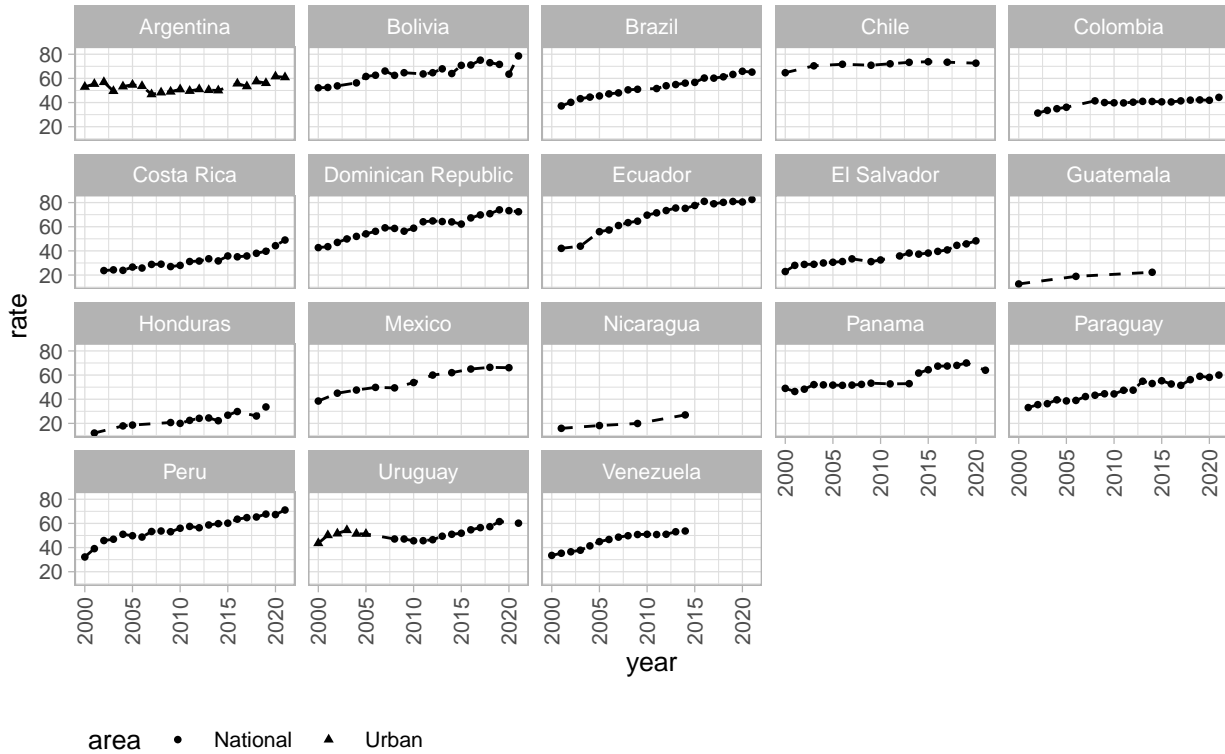
area • National ▲ Urban

Net attendance rate by country
ISCED 2



area • National ▲ Urban

Net attendance rate by country
ISCED 3



2.4 Out-of-school rate (1 year before primary, primary education, lower secondary education, upper secondary education)

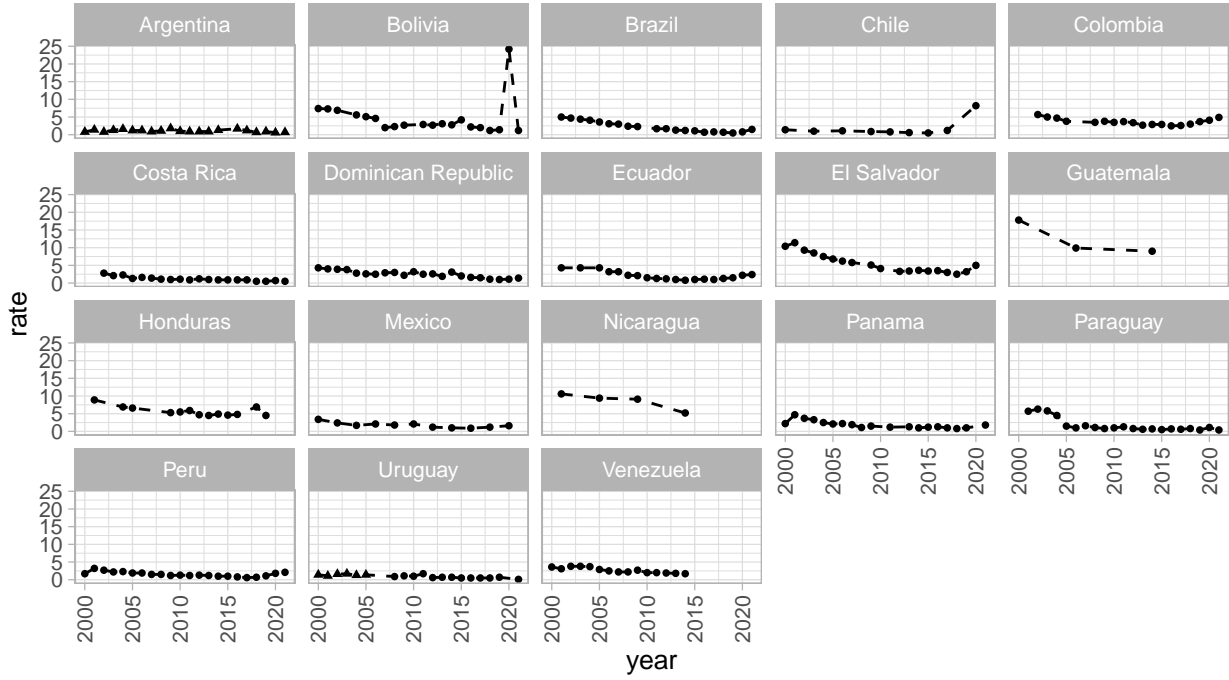
Definiton: Proportion of children and young people in the official age range for the given level of education who are not enrolled in pre-primary, primary, secondary or higher levels of education

$$OSR_n = \frac{SAP_n - \sum_{i=1}^3 E_{i,AGn}}{SAP_n}$$

Where:

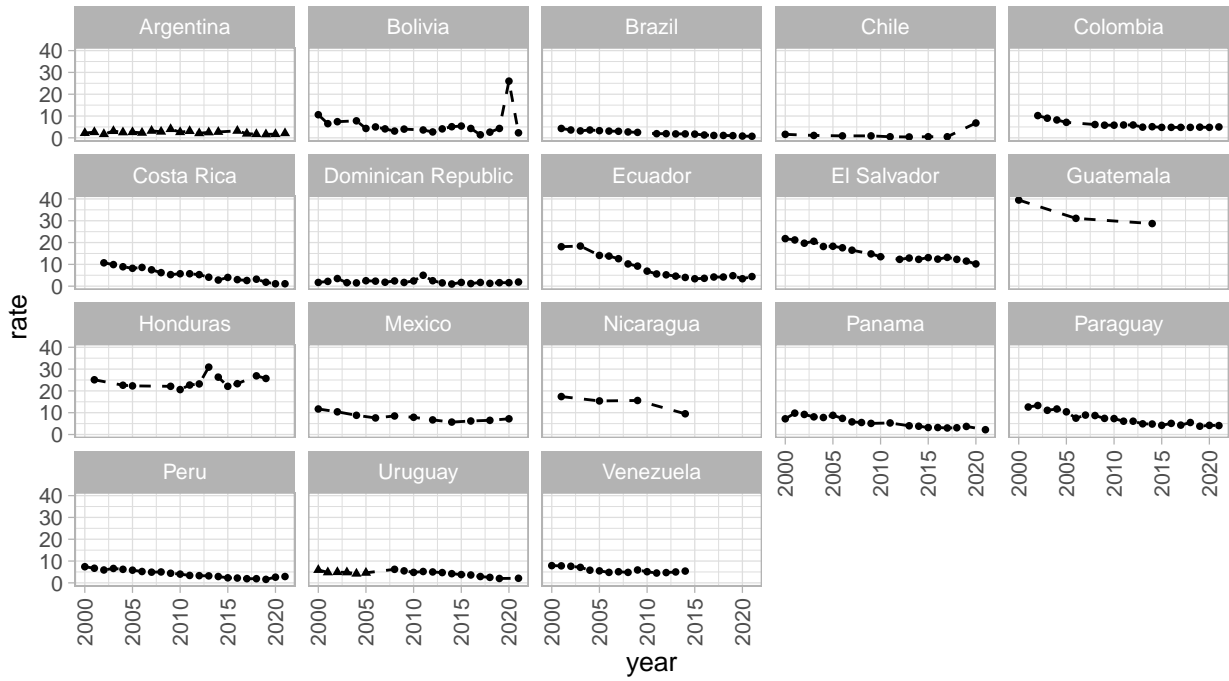
- OSR_n = out-of-school rate for children and young people of the official age for level **n** of education
- SAP_n = population of the official age for level **n** of education
- $E_{i,AGn}$ = enrolment in ISCED level **i** of children and young people of the official age for level **n** of education

Out-of-school rate (OOSR) by country
ISCED 1



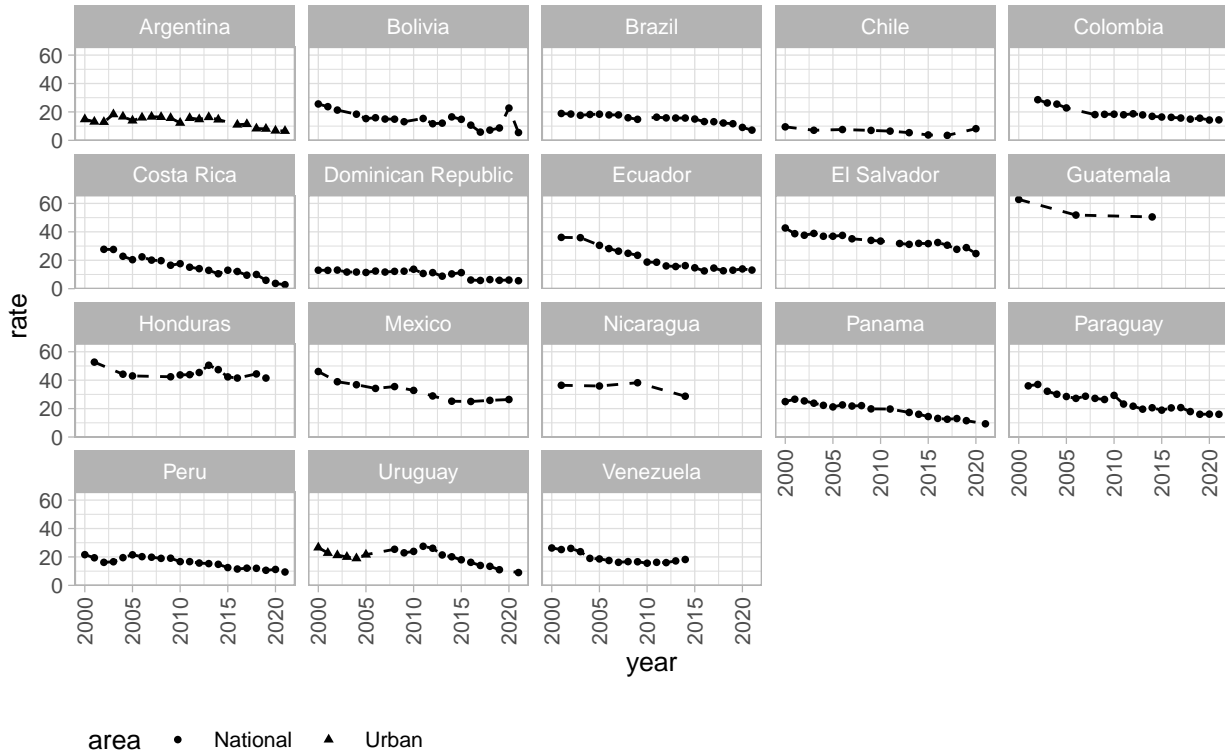
area • National ▲ Urban

Out-of-school rate (OOSR) by country
ISCED 2



area • National ▲ Urban

Out-of-school rate (OOSR) by country
ISCED 3



2.5 Completion rate (primary education, lower secondary education, upper secondary education)

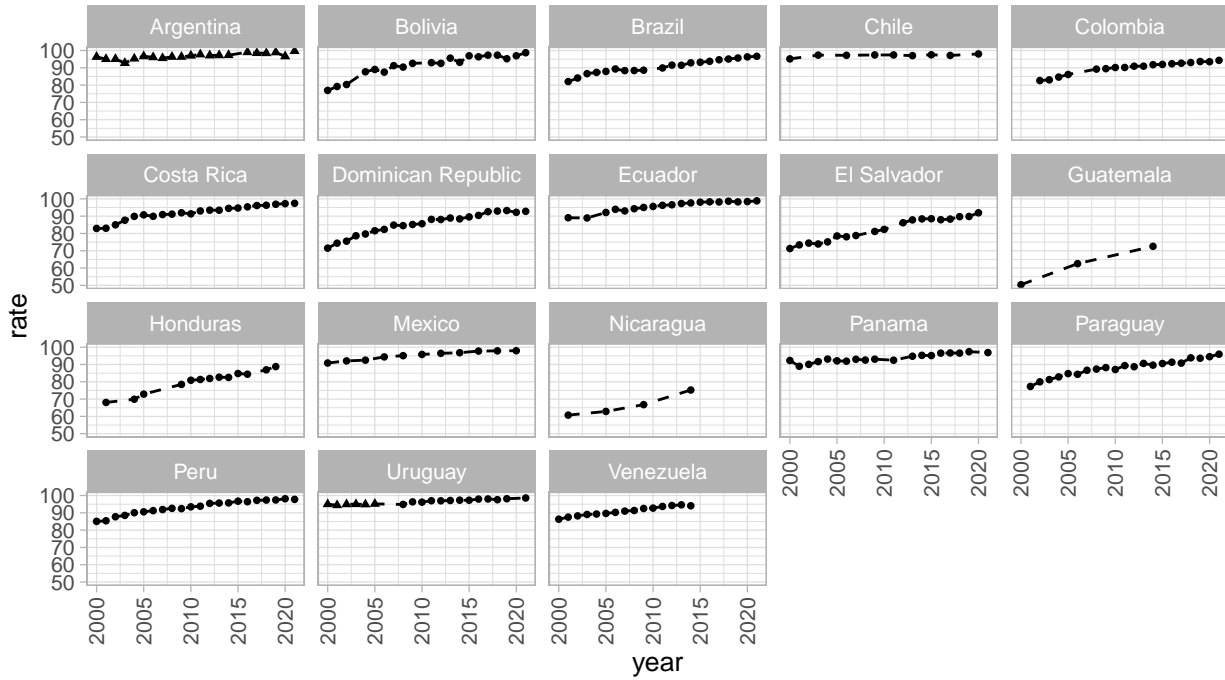
Definition: Percentage of a cohort of children or young people aged 3-5 years above the intended age for the last grade of each level of education who have completed that grade.

$$CR_n = \frac{EAP_{n,AG(a+3t5)}}{PAG_{(a+3t5)}}$$

Where:

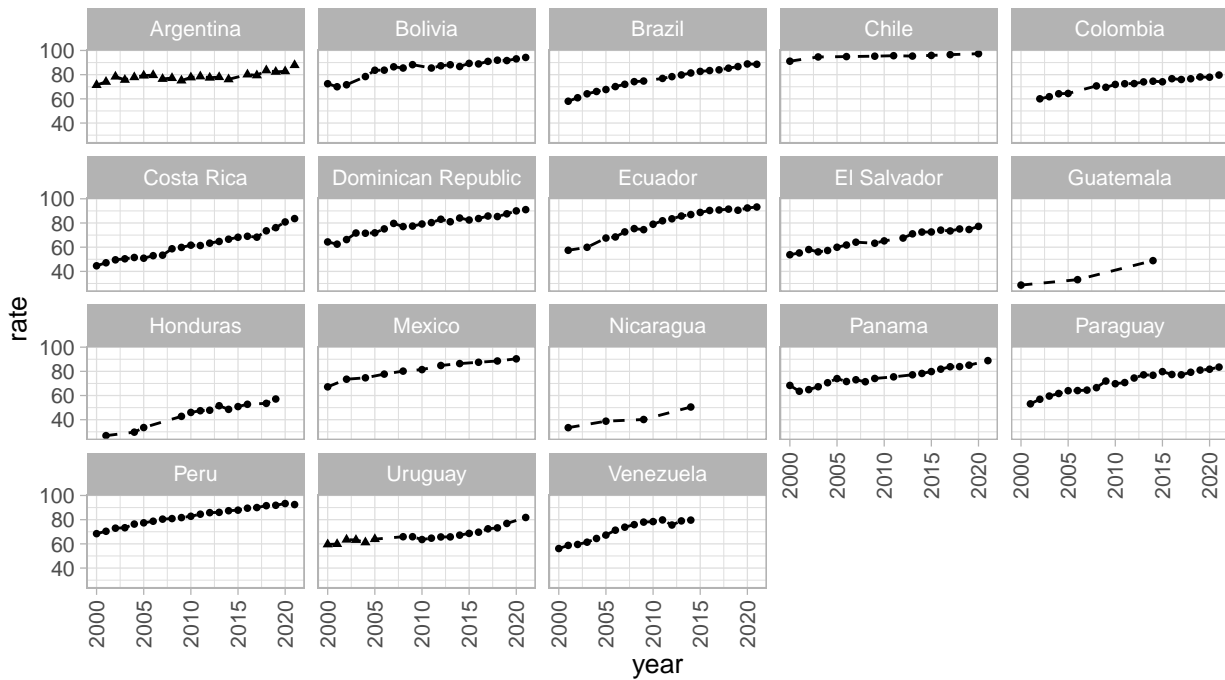
- CR_n = completion rate for level **n**
- $EAP_{n,AG(a+3tp)}$ = population aged 3 to 5 years above the official entrance age **a** into the last grade of level **n** of education who completed level **n**
- PAG_{a+3tp} = population aged 3 to 5 years above the official entrance age **a** into the last grade of level **n** of education

Completion rate by country
ISCED 1



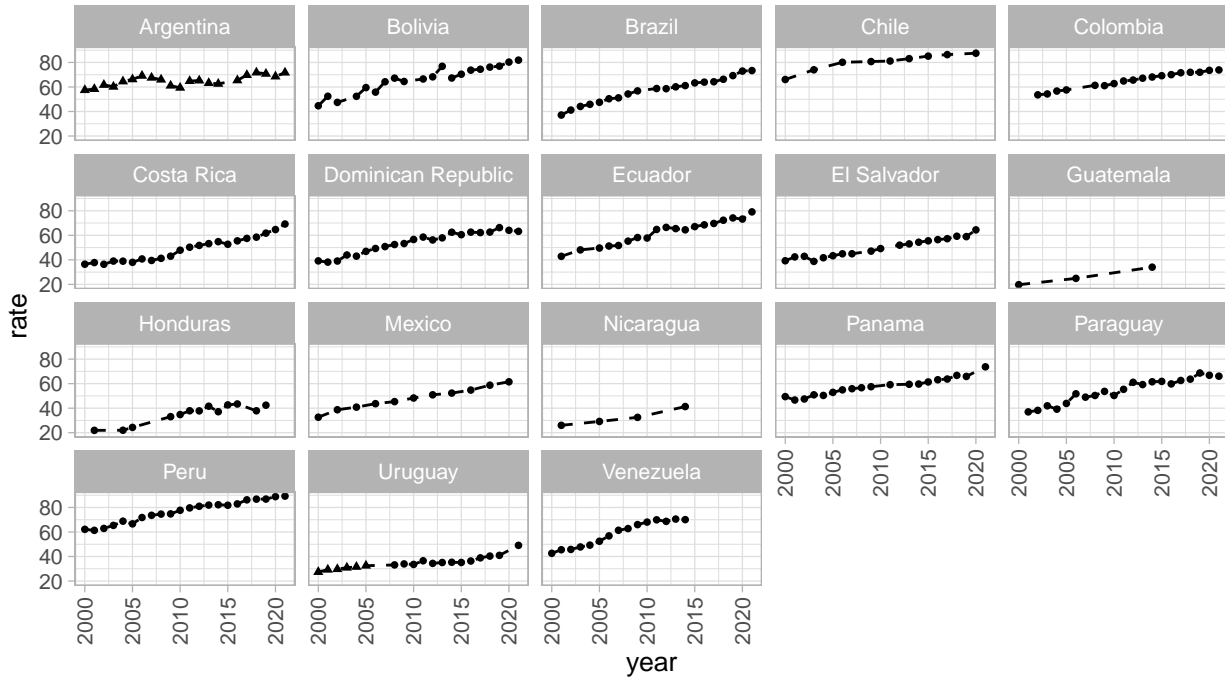
area • National ▲ Urban

Completion rate by country
ISCED 2



area • National ▲ Urban

Completion rate by country
ISCED 3



area • National ▲ Urban

2.6 Gross enrolment ratio for tertiary education

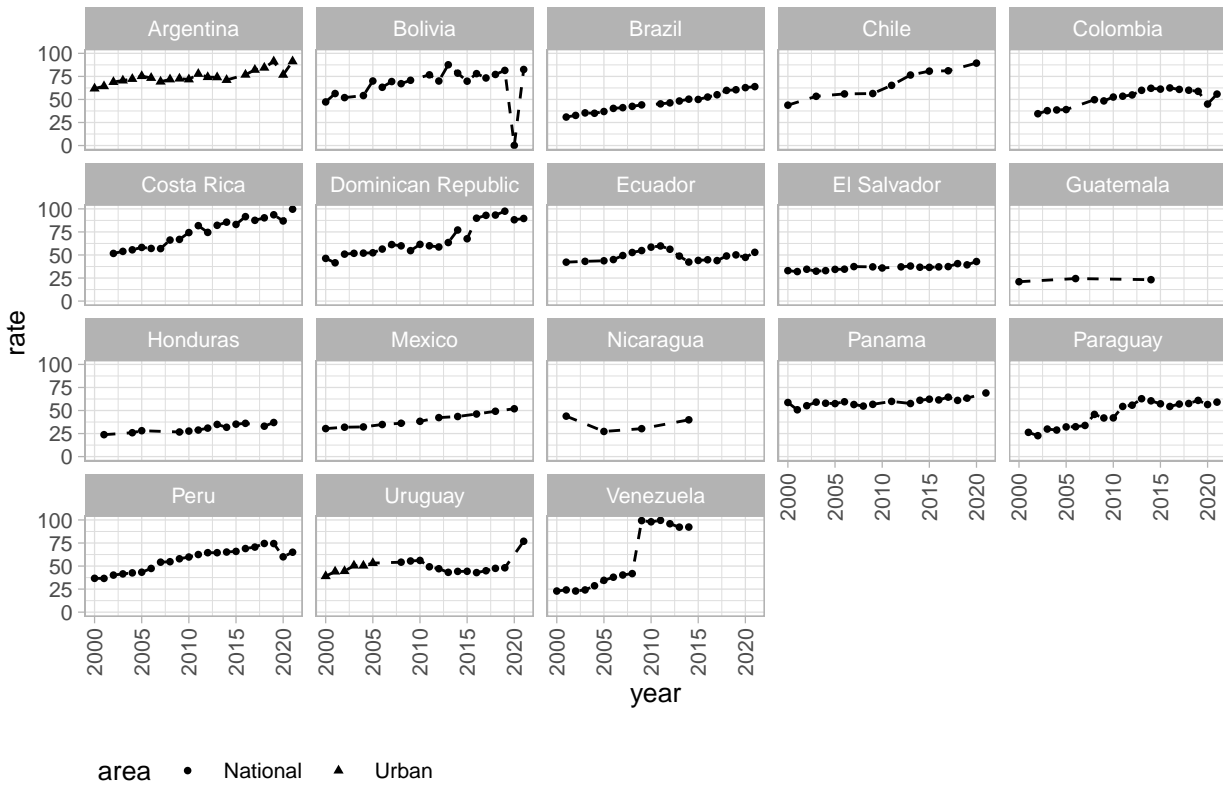
Definition: Total enrolment in tertiary education regardless of age expressed as a percentage of the population in the 5-year age group immediately following upper secondary education.

$$GER_{5t8} = \frac{E_{5t8}}{SAP_{5t8,a}}$$

Where:

- GER_{5t8} = gross enrolment ratio in tertiary education (ISCED levels 5, 6, 7 and 8)
- E_{5t8} = enrolment in tertiary education (ISCED levels 5, 6, 7 and 8)
- $SAP_{5t8,a}$ = population of the official age group a for tertiary education (ISCED levels 5, 6, 7 and 8).

Gross Enrolment for Tertiary Education by country



2.7 Participation rate in organized learning (one year before the official primary entry age)

[link to the source](#)

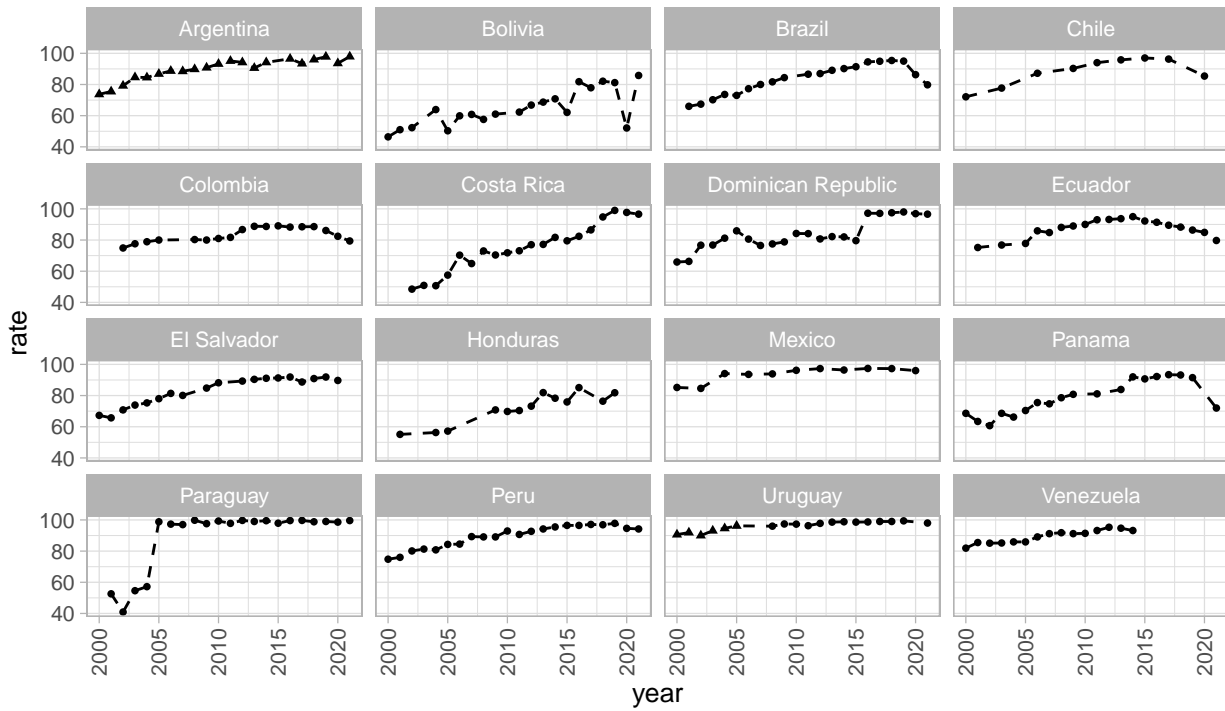
Definiton: The participation rate in organized learning (one year before the official primary entry age), by sex is defined as the percentage of children in the given age range who participate in one or more organized learning programme, including programmes which offer a combination of education and care.

$$PROL_{0t1,AG(a-1)} = \frac{E_{0t1,AG(a-1)}}{SAP_{AG(a-1)}}$$

Where:

- $PROL_{0t1,AG(a-1)}$ = participation rate in organized learning one year before the official entry age **a** to primary education
- $E_{0t1,AG(a-1)}$ = enrolment in early childhood or primary education (ISCED levels 0 and 1) aged one year below the official entry age **a** to primary education
- $SAP_{AG(a-1)}$ = school-age population aged one year below the official entry age **a** to primary education

Participation rate 1yr before primary by country



area • National ▲ Urban

A Appendix

A.1 Information about educational cycles

Country	Official entrance age for primary school (e)	Primary cycle duration (db)	duration of the lower secondary cycle (dfs)	High school cycle duration (das)	Official entry age for lower secondary school (ebs)	Official entrance age to high school (eas)
Argentina	6	6	3	3	12	15
Bolivia	6	6	2	4	12	14
Brazil	6	5	4	3	11	15
Chile	6	6	2	4	12	14
Colombia	6	5	4	2	11	15
Costa Rica	6	6	3	2	12	15
Ecuador	6	6	3	3	12	15
El Salvador	7	6	3	2	13	16
Guatemala	7	6	3	2	13	16
Honduras	6	6	3	2	12	15
Mexico	6	6	3	3	12	15
Nicaragua	6	6	3	2	12	15
Panama	6	6	3	3	12	15
Paraguay	6	6	3	3	12	15
Peru	6	6	3	2	12	15
Dominican Republic	6	6	2	4	12	14
Uruguay	6	6	3	3	12	15
Venezuela	6	6	3	2	12	15

Table 1: Information about education cycles by country based on ISCED 2011.

Education level	Description	Criteria	ISCED1	ISCED2	ISCED3
1	Incomplete primary	$ae < db$			
2	Complete primary	$ae = db$	O		
3	Incomplete low secondary	$ae > db \& ae < (db + dfs)$	O		
4	Incomplete upper secondary	$ae \geq (db + dfs) \& (ae < (db + dfs + das))$	O	O	
5	Complete secondary	$ae == (db + dfs + das)$	O	O	O
6	Incomplete tertiary	$ae > (db + dfs + das) \& ae < (db + dfs + das + 5)$	O	O	O
7	Complete tertiary	$ae \geq (db + dfs + das + 5)$	O	O	O

Table 2: Information about the construction of educational levels and ISCED criteria based on the information from Table 1.

A.2 Availability of information on sampling design

Year	ARG	BOL	BRA	CHL	COL	CRI	DOM	ECU	GTM	HND	MEX	NIC	PAN	PER	PRY	SLV	URY	VEN
2000	X	X	...	O	...	X	O	...	X	...	X	...	O	O	...	X	O	X
2001	X	X	O	X	O	X	...	X	...	X	O	O	X	X	O	X
2002	X	O	X	...	X	X	O	X	...	O	O	X	X	X	X
2003	X	...	X	X	X	X	O	X	O	O	X	O	X	X
2004	X	X	X	...	X	X	O	X	X	...	O	O	X	O	X	X
2005	X	O	X	...	X	X	O	X	...	X	...	X	O	O	X	O	X	X
2006	X	X	X	X	...	X	O	X	X	...	X	...	O	O	X	O	...	X
2007	X	O	X	X	O	X	O	O	X	O	X	X
2008	X	O	X	...	O	X	O	X	O	...	O	O	X	...	X	X
2009	X	O	X	O	X	X	O	X	...	X	...	O	X	O	X	O	X	X
2010	X	X	X	O	X	...	X	O	O	X	O	X	X
2011	X	O	X	O	X	X	O	X	...	X	O	O	X	...	X	X
2012	X	O	X	...	X	X	O	X	...	X	O	O	X	X	X	X
2013	X	O	X	O	X	X	O	X	...	X	O	O	X	X	X	X
2014	X	O	O	...	X	X	O	X	X	X	O	X	X	O	X	X	X	X
2015	...	O	O	O	X	O	O	X	...	X	X	O	X	X	X	...
2016	X	O	O	...	X	O	O	X	...	X	O	...	X	O	X	X	X	...
2017	X	O	O	O	X	O	O	X	X	O	X	X	X	...
2018	X	O	O	...	X	O	O	O	...	X	O	...	X	O	X	X	O	...
2019	X	O	O	...	X	O	O	O	...	X	X	O	X	X	O	...
2020	X	O	O	O	X	O	O	O	O	O	X	X	X	...
2021	X	O	O	...	X	O	O	O	X	O	X	...	X	...

This table has the information about types of sampling, where:

O: upm and strata are available, X: upm and strata are not available, ... : no data

A.3 Data sources

Table 3: Household survey data by country and year

Country	Survey	Geographic coverage	Years	Survey period
Argentina	Encuesta Permanente de Hogares - EPH	Urban	2000 to 2021	4th quarter
Bolivia (Est. Pluri. De)	Encuesta de Hogares	National	2002	Nov. - Dec.
	Encuesta Continua de Hogares - ECH	National	2004 to 2021	November
Brazil	Pesquisa por Amostra de Domicilios - PNAD	National	2001 to 2015	September
	Pesquisa por Amostra de Domicilios Continua - PNAD Continua	National	2016 to 2021	Annual
Chile	Encuesta de Caracterización Socioeconómica Nacional - CASEN	National	2003 to 2020	November to January
Colombia	Encuesta Continua de Hogares	National	2002 to 2008	Annual
	Gran Encuesta Integrada de Hogares	National	2008 to 2021	Annual
Costa Rica	Encuesta de Hogares de Propósitos Múltiples	National	2000 to 2009	July
Ecuador	Encuesta Nacional de Hogares - ENAHO	National	2010 to 2021	July
	Encuesta de Empleo, Subempleo y Desempleo en el Area Urbana y Rural	National	2001 to 2021	December
El Salvador	Encuesta de Hogares de Propósitos Múltiples	National	2001 to 2020	Annual
Guatemala	Encuesta Nacional de Condiciones de Vida - ENCOVI	National	2002, 2006 y 2014	Different periods
Honduras	Encuesta Permanente de Hogares de Propósitos Múltiples	National	2001 to 2019	May or June
Mexico	Encuesta Nacional de Ingresos y Gastos de los Hogares - ENIGH	National	2002 to 2006	3rd quarter
	Módulo de Condiciones Socioeconómicas de la MCS-ENIGH	National	2008 to 2014	Aug - Nov.
	Encuesta Nacional de Ingresos y Gastos de los Hogares - ENIGH - Nueva serie	National	2016 to 2020	Aug - Nov.
Nicaragua	Encuesta Nacional de Hogares sobre Medición de Niveles de Vida	National	2005, 2009 y 2014	Different periods
Panama	Encuesta de Mercado Laboral	National	2001 to 2013	August
	Encuesta de Propósitos Múltiples	National	2014 to 2019	March
	Encuesta de Mercado Laboral	National	2021	October
Paraguay	Encuesta Integrada de Hogares	National	2001 y 2002	Nov-Dec.
	Encuesta Permanente de Hogares	National	2003 to 2016	Oct - Dec.
	Encuesta Permanente de Hogares	National	2017 to 2021	Annual
Peru	Encuesta Nacional de Hogares - Condiciones de Vida y Pobreza	National	2001 to 2003	4th quarter
	Encuesta Nacional de Hogares - Condiciones de Vida y Pobreza	National	2004 to 2021	Annual
Dominican Republic	Encuesta de Fuerza de Trabajo - EFT	National	2001 to 2015	October
	Encuesta Nacional Continua de Fuerza de Trabajo - ENCFT	National	2016 to 2021	Annual
Uruguay	Encuesta Continua de Hogares	Urban	2001 to 2005	Annual
	Encuesta Continua de Hogares	National	2007 to 2021	Annual
Venezuela (Rep. Bol. de)	Encuesta de Hogares por Muestreo	National	2001 to 2014	2nd semester

Source: Economic Commission for Latin America and the Caribbean (ECLAC), based on the Household Survey Data Bank (BADEHOG).