



World Food  
Programme

SAVING  
LIVES  
CHANGING  
LIVES

## CONNECTING THE DOTS: THE LINK BETWEEN HUNGER, MALNUTRITION AND EDUCATION – A NEW SCHOOL MEALS INDICATOR UNDER SDG 4

**Carmen Burbano**

Director - School Based Programmes,  
World Food Programme

**Donald Bundy**

Director - Research Consortium for  
School Health and Nutrition

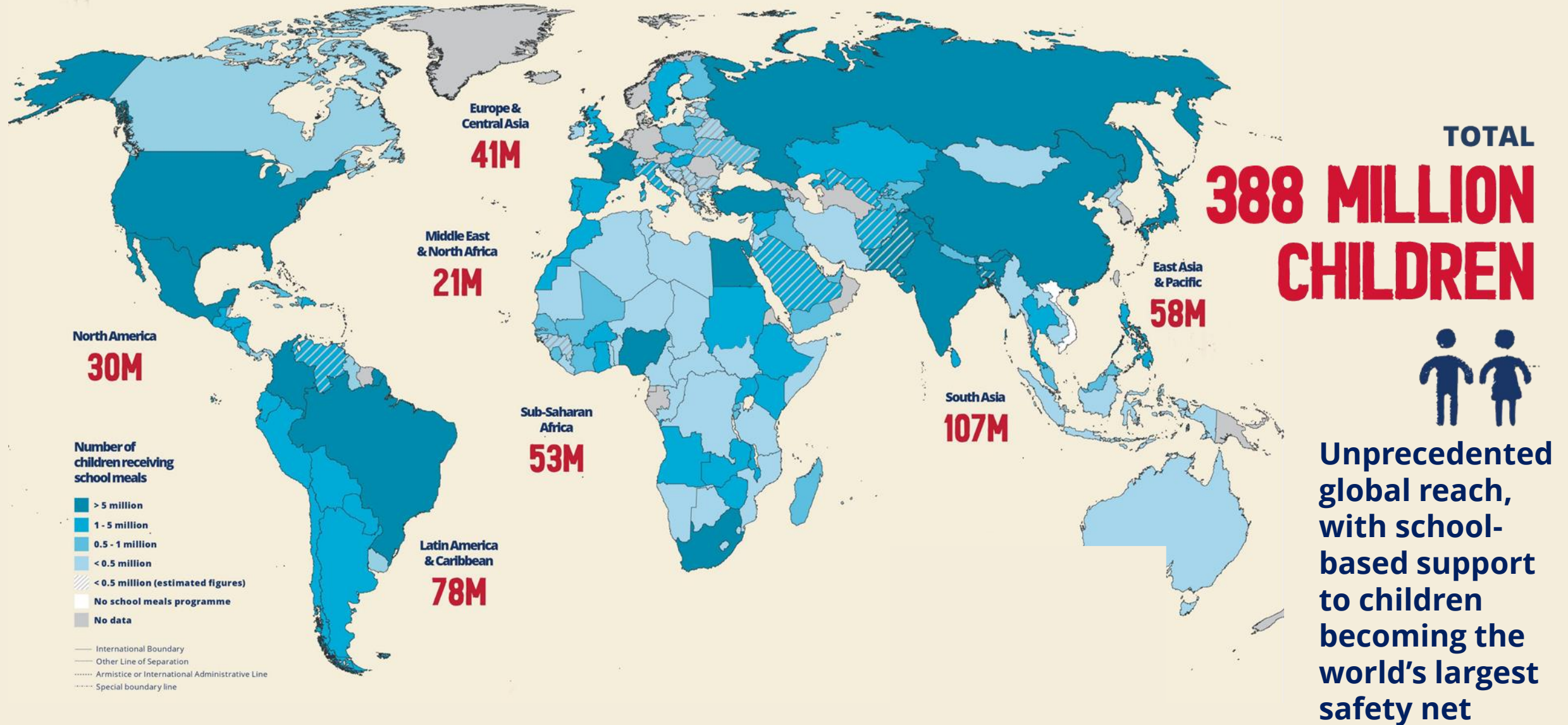


School  
Meals  
Coalition  
No-Risk, Health and  
Education for Every Child



World Food  
Programme

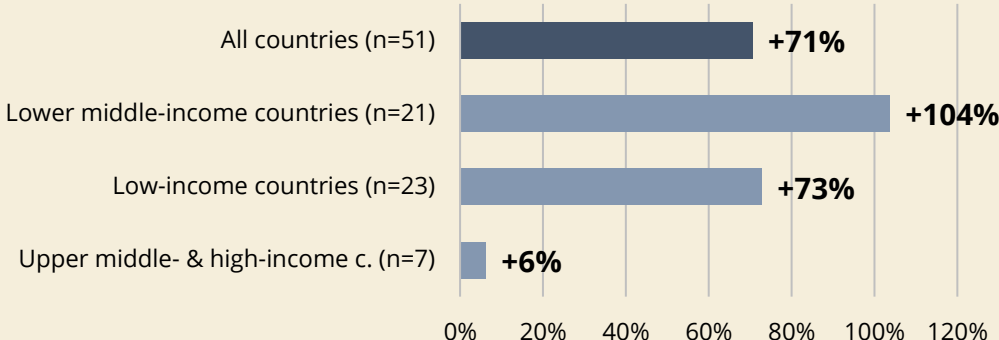
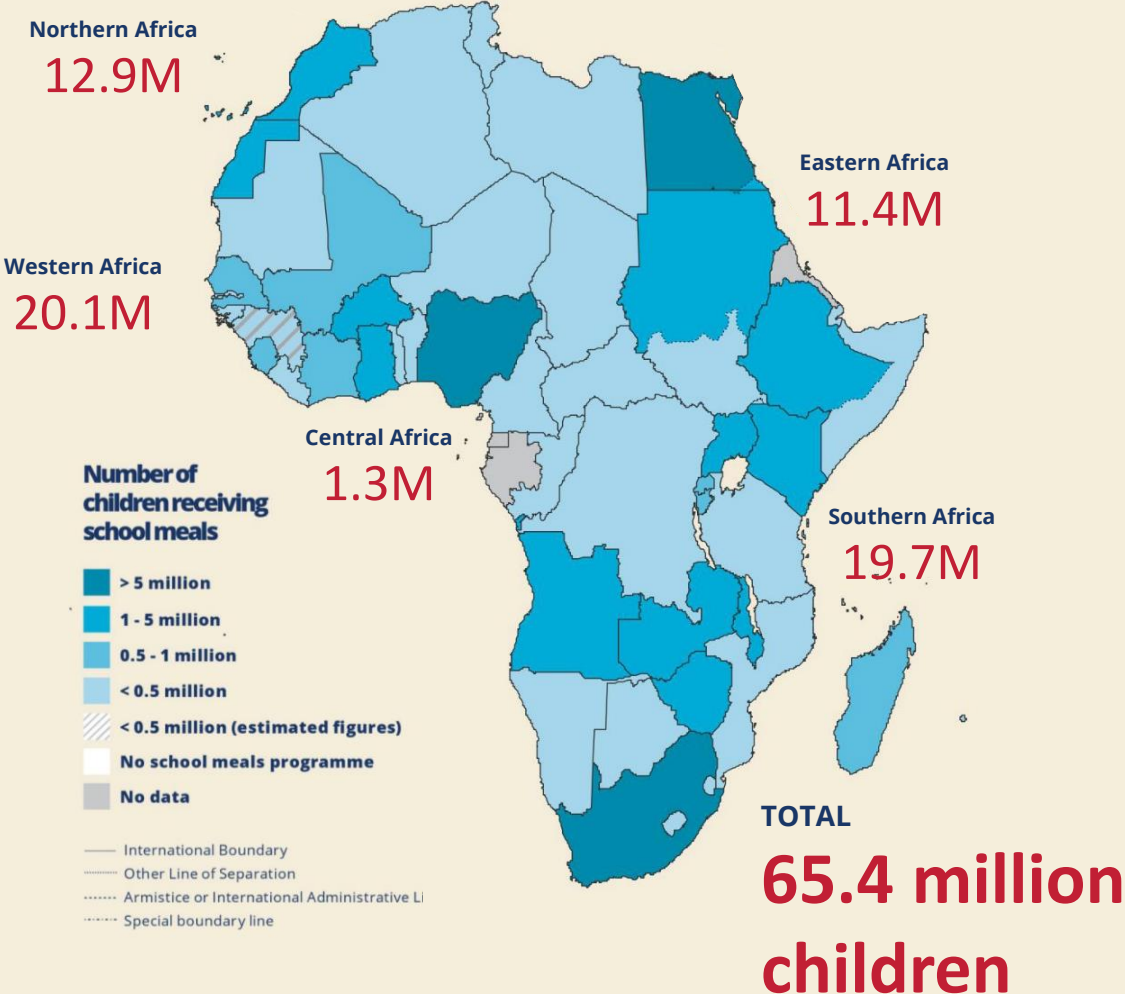
# Unprecedented global reach: 1 in every 2 children receiving school meal





# Exceptional growth of school feeding in Africa

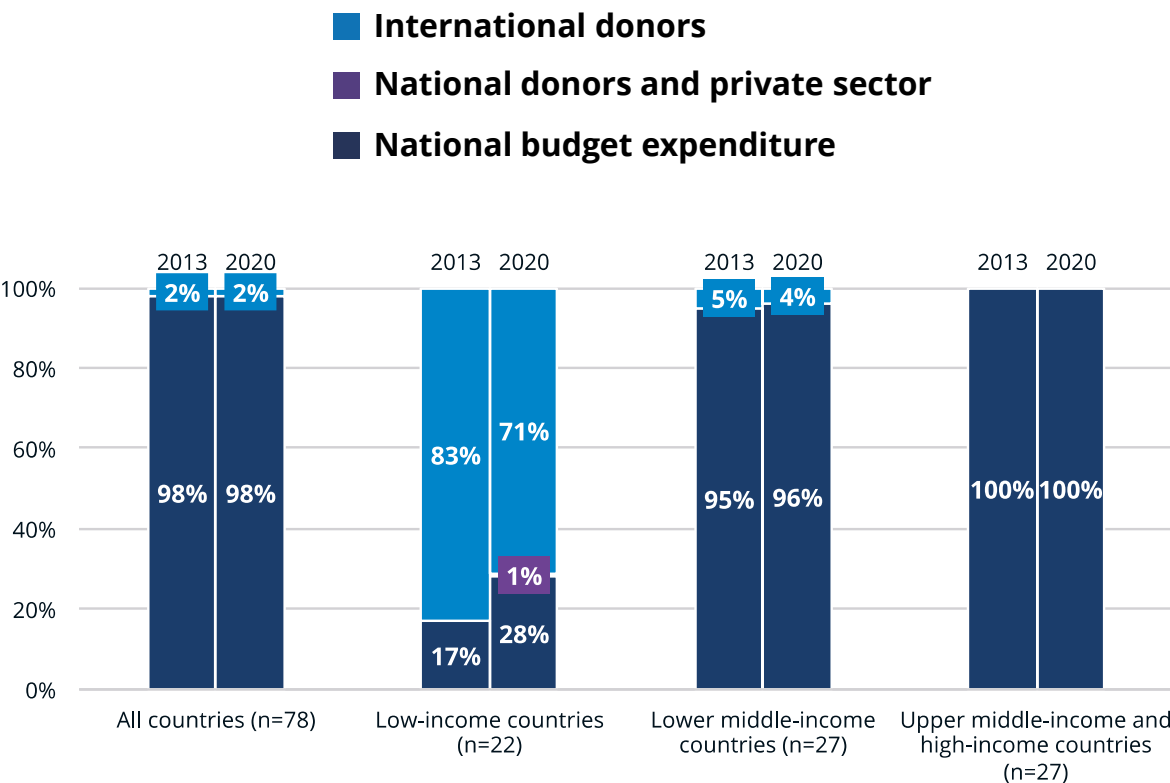
## Number of children receiving school feeding in Africa



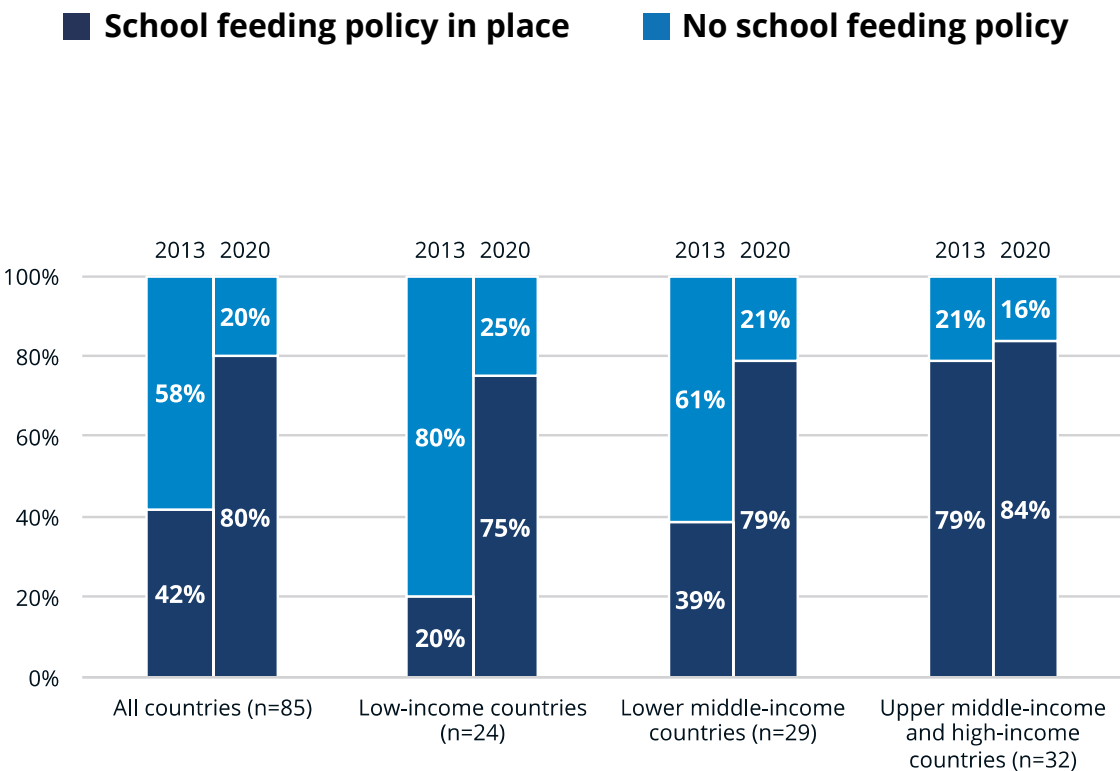
There are **65.4 million** children receiving school feeding in Africa, a massive increase from 38.4 million in 2013

# 98% of funding is from the countries themselves

School feeding budgets by source of funding  
2013-2020

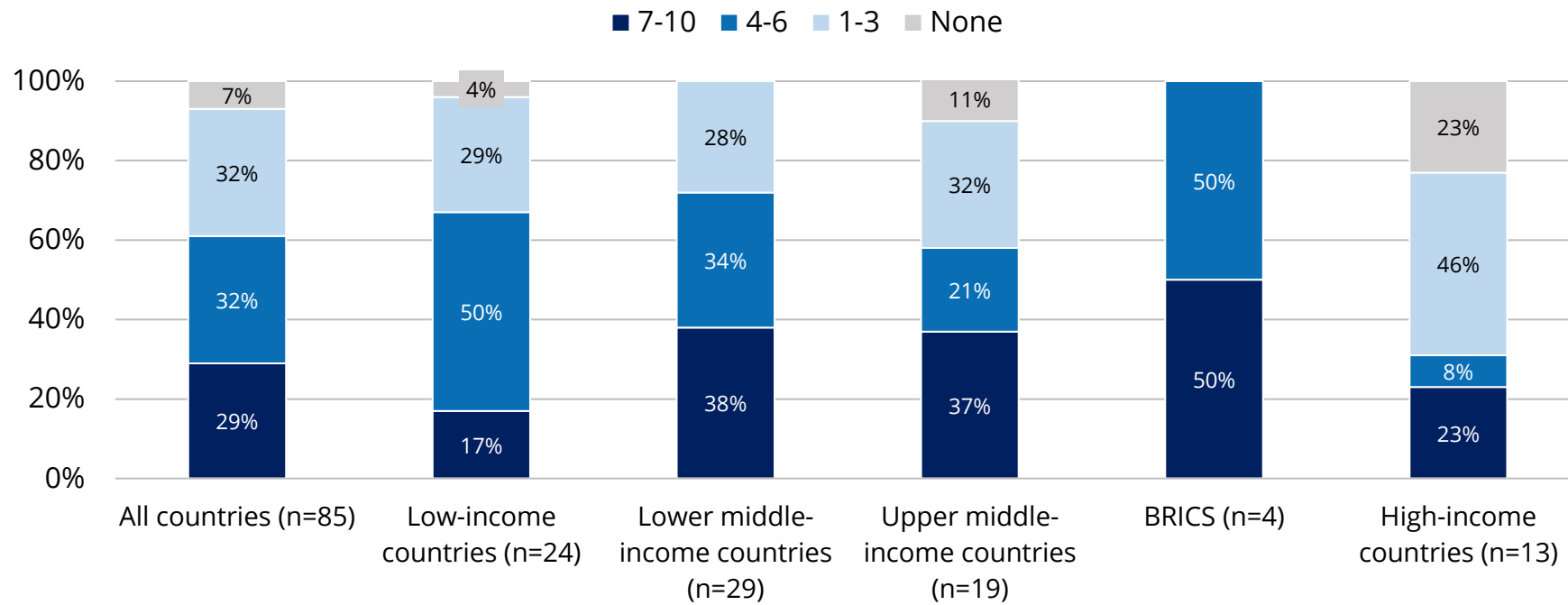


Countries with a school feeding policy  
2013-2020

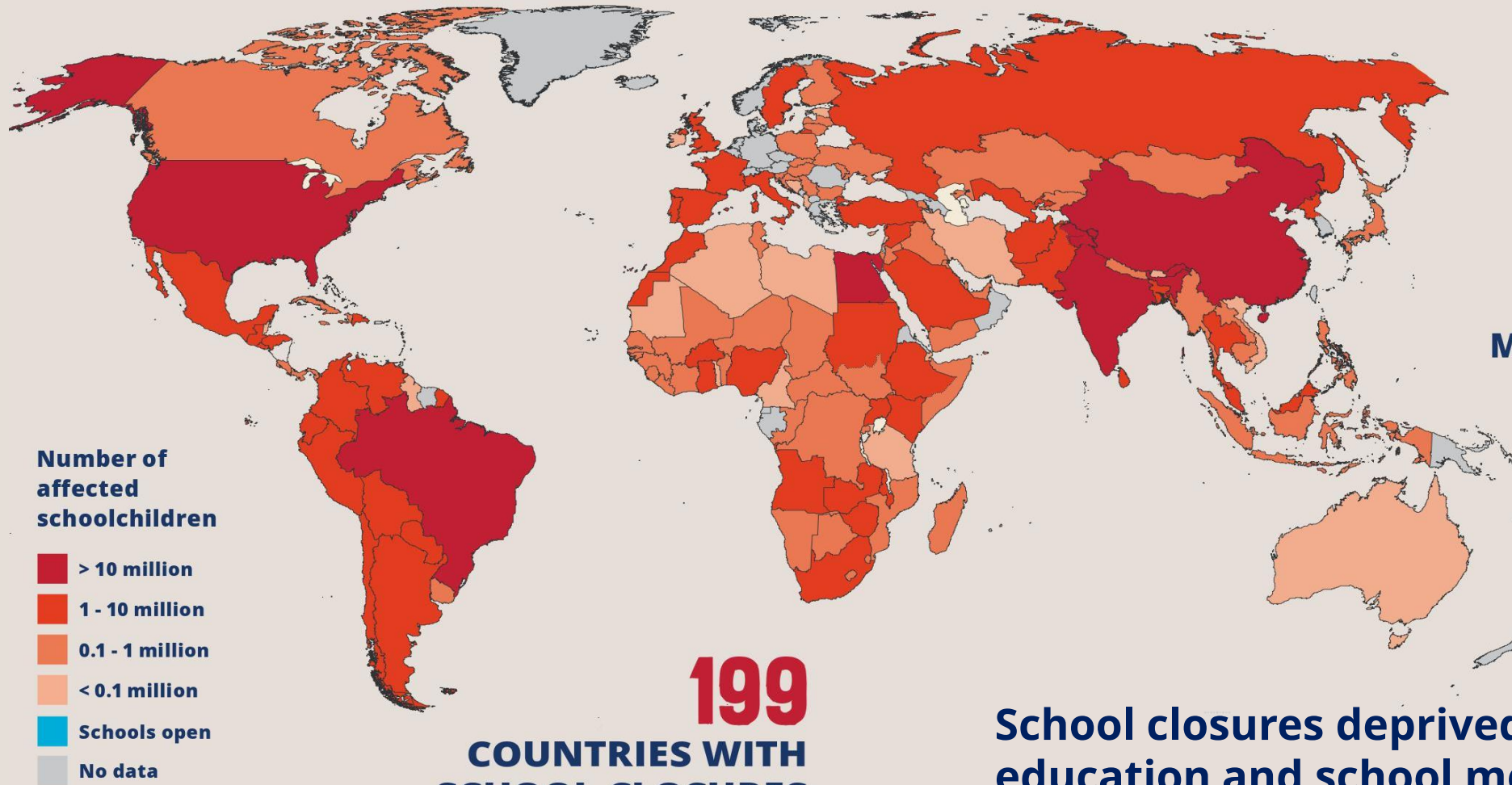


# 90% of governments deliver school meals alongside other complementary interventions

## Number of complementary health and nutrition interventions implemented with school feeding



# COVID-19 school closures suddenly deprived children of education and school meals



**370 MILLION  
CHILDREN**  
MISSING OUT ON SCHOOL  
MEALS GLOBALLY

**199**  
COUNTRIES WITH  
SCHOOL CLOSURES

School closures deprived children of education and school meals, and increased the awareness of schools as a platform for health service delivery

# School closures affected both the education and wellbeing of the learner

Press release

## Impact of COVID-19 on poor mental health in children and young people 'tip of the iceberg'

*New analysis indicates lost contribution to economies due to mental disorders among young people estimated at nearly \$390 billion a year*

04 October 2021

## Child marriage has more than doubled during the COVID-19 pandemic with numbers set to increase, World Vision warns

THURSDAY, MAY 20, 2021

Press release

## Child labour rises to 160 million – first increase in two decades

*The International Labour Organization and UNICEF warn 9 million additional children at risk as a result of COVID-19 pandemic*

09 June 2021

# **SCHOOL MEALS COALITION (SMC)**



# Building the member-state led coalition

## 74 Governments have signed Declaration of Commitment

**Europe:** Denmark, Finland, France, Germany, Iceland, Luxembourg, Monaco, Norway, Poland, Spain, Sweden;

**Africa:** Angola, Benin, Burkina Faso, Burundi, Cameroon, Chad, Democratic Republic of Congo, Egypt, Ethiopia, Gambia, Guinea, Kenya, Lesotho, Liberia, Madagascar, Mali, Mauritania, Morocco, Mozambique, Namibia, Niger, Nigeria, Republic of Congo, Rwanda, Senegal, Sierra Leone, Somalia, Sudan, Tanzania, Togo, Zambia, Zimbabwe; **Latin America and the**

**Caribbean:** Argentina, Bolivia, Brazil, Chile, Colombia, Cuba, Dominican Republic, Ecuador, El Salvador, Guatemala, Guyana, Haiti, Honduras, Panama; **Asia and the Pacific:** Armenia, Bhutan, Cambodia, China, Iraq, Japan, Nepal, Pakistan,

Philippines, Sri Lanka, Thailand, Timor Leste, **United Arab Emirates**; **North America:** Canada, United States; **Regional**

**Bodies:** European Union, African Union

**17 National Commitments:** Burkina Faso, Cambodia, Chile, China, Dominican Republic, DRC, Finland, France, **Gambia**, Germany, Guatemala, Honduras, Japan, Philippines, Rwanda, USA and **Zambia**

Global support and momentum - 6 high-level Declarations have supported the establishment of the Coalition: [AU Declaration](#), [Nordic Ministerial FSS Declaration](#), [European Council Conclusions on FSS](#), [G20 Matera Declaration](#), [G20 Rome Leaders' Declaration](#), [AU 2022 Communique](#)

# Partners that signed the Call to Action for SDG4 School Meals Indicator

## 76 partners



# Support for SDG4 School Meals Indicator

## Helsinki Declaration



African Union



Kenya



Finland



Iceland



France



Rwanda



Guatemala



Senegal



Honduras



Sweden



Japan



United States of America

## Research Consortium Statement

LONDON  
SCHOOL OF  
HYGIENE  
& TROPICAL  
MEDICINE



Research  
Consortium for  
**SHN**



### Statement to the Ministerial Meeting of the School Meals Coalition

*Prepared by the Research Consortium for School Health and Nutrition on behalf of the School Meals Coalition for the parliamentarians and public-policy makers of the member countries of the Coalition.*

18 October 2022

#### Overview

##### Insights on What We Have Learned from the Pandemic

1. The school closures of the pandemic have caused major, long-term harm in all countries.
2. The Global Food Crisis is making recovery more difficult, and even more necessary.
3. Recovery of the education system and investment in young people is crucial for the future of this generation and the Wealth of Nations.
4. The well-being, education and development of young people during the first 8,000 days of life are crucial for the economic and social future of all countries, whether high- or low-income countries.

##### Insights on the Design and Benefits of Programmes

1. Benefits for education: more children go to school, and they learn better while there.
2. Benefits for health and nutrition: children and young people enjoy better well-being and learning, and establish life-long health and dietary practices which promote their well-being, productivity and longevity as adults.
3. Benefits for social protection: national school meals programmes are among the most extensive and effective safety nets in the world.



# Countries expand their investment in their young people



**President Paul Kagame of Rwanda** commits to scaling up their national school meals program from 640,000 children today to 3.3 million children in two years.



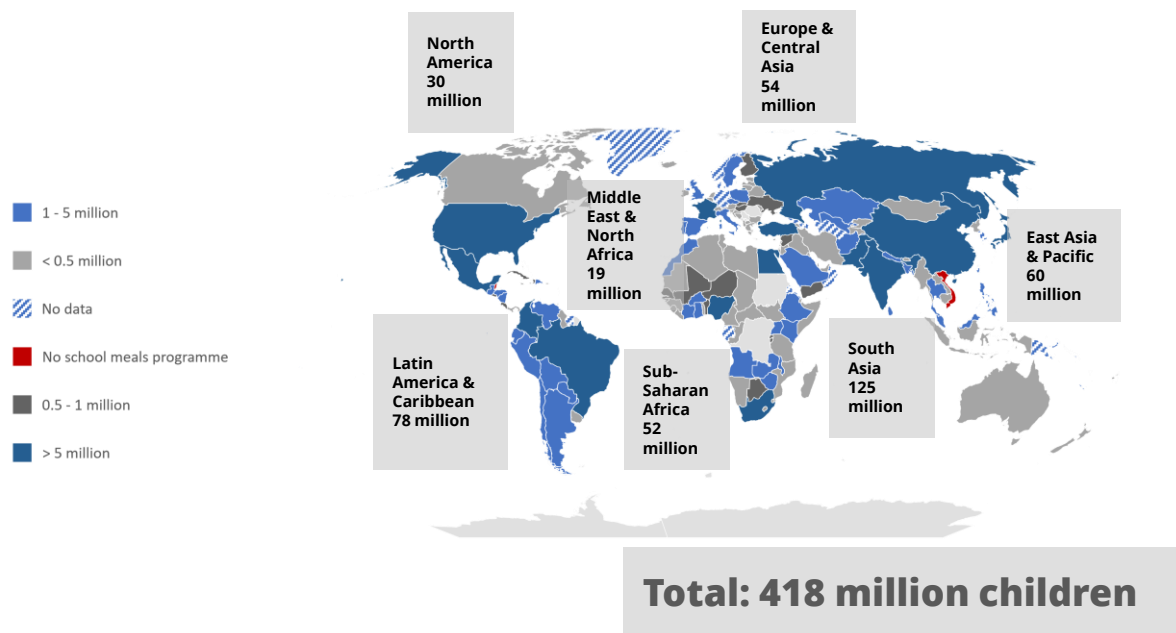
**President Patrice Talon of Benin** announces a national budget commitment of \$270 million dollars over the next five years to scale up Benin's national program.



# Preview of 2022 State of School Feeding Worldwide Results

**Confidential – 2022 (under embargo)**

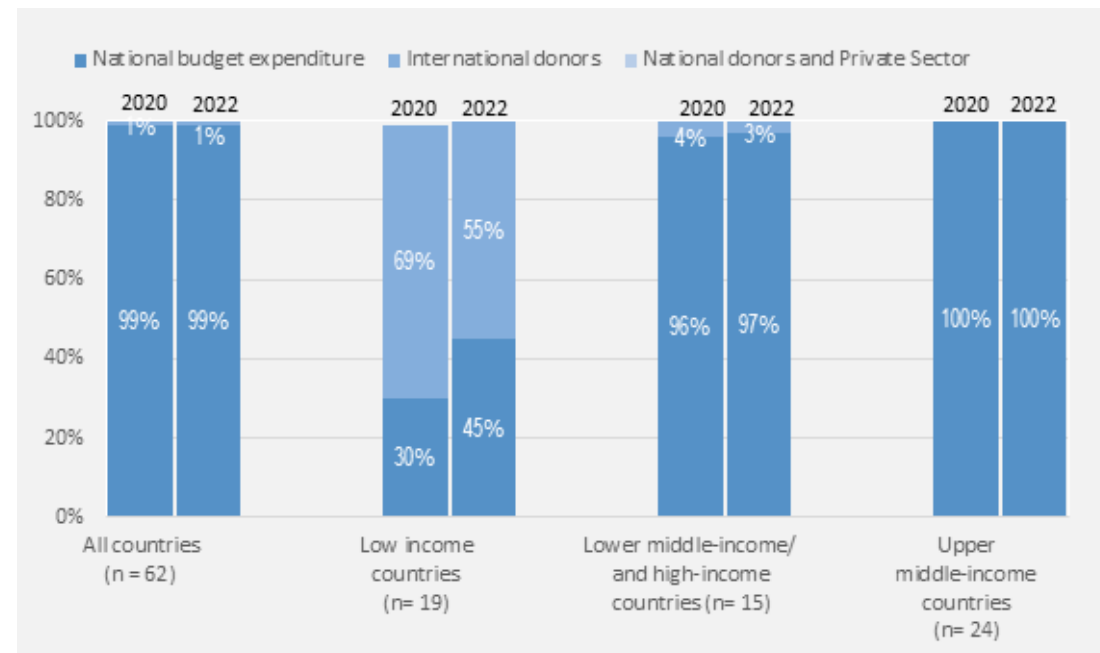
## Children receiving school meals around the world



Powered by Bing  
© Australian Bureau of Statistics, GeoNames, Microsoft, Navinfo, OpenStreetMap, TomTom

**Confidential – 2022 (under embargo)**

## School feeding budgets by source of funding



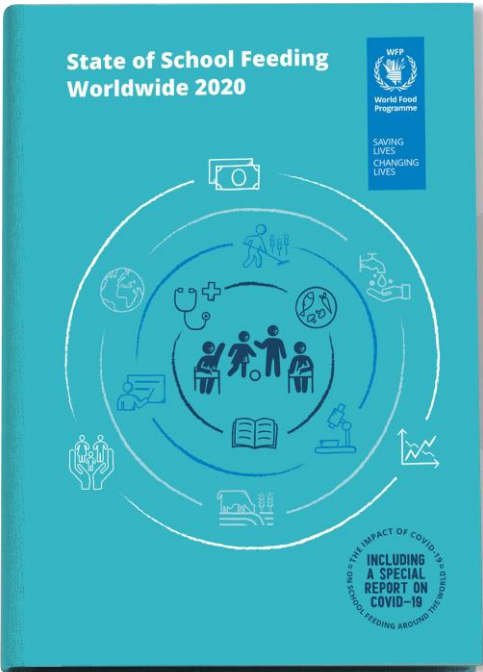
# Reporting on State of School Feeding – Every 2 Years

2013

2020

2022

every 2 years



Available at [wfp.org](https://wfp.org) in 7 languages



**Q&A**