



**unesco**

Institute for Statistics

WG/EMIS/3



# National Population Data: criteria for use in UIS indicator calculation

9<sup>th</sup> Technical Cooperation Group meeting

22 November 2022



# Background

Following the 8<sup>th</sup> Technical Cooperation Group (TCG) in November 2021, members endorsed a proposal to adopt a hybrid approach to the use of population data in UIS statistics.

- Under this proposal, countries would have the possibility to request the use of national data for the calculation of population-based indicators in place of the World Population Prospects estimates from the UNDESA Population Division (UNPD);
- This marks a change from previous UIS policy whereby exceptions from the use of UNPD estimates were only made on special request and only for a limited number of countries.

# 8th TCG decisions on the use of population data in indicator calculation

1. Introduce the possibility for all countries to report population data as required by the UIS through:

- adding a dedicated module where countries can report their national population estimates; and/or;
- expanding UIS tools for data collection.

2. Source national population statistics from national or regional publicly available data, according to countries' preferences. Where countries do not request the use of national data, UNPD data will be used by default.

3. In cases where authorities request the use of national population data and there are multiple sources of data, prioritize population estimates from national statistics offices or bureau of population census.

# Data requirements for use of national population data

**Criteria for the use of national population data: all criteria presented in the table are essential for the UIS to use the national population data**

Criteria	Assessment	
	Data	Metadata
1. A complete time series from 2000- 2022.	X	X
2. Complete sex and age disaggregated data for the 0-99 age population.	X	X
3. Data is compiled and disseminated publicly		X
4. Adequate population coverage.		X

# Metadata required

1. Population data coverage requirement: in order for the UIS to use the data:
  - Less than 5% of the target population excluded (as assessed by the reporting country)
2. Metadata to be collected
  - Data source (population census, sample survey, estimate or other)
  - Website where data can be publically accessed;
  - Type of the count of population (present population (de-facto), usually resident population, registered population or other)
  - Proportion of the total national population is excluded or unenumerated (less than 1%, between 1% and 5%, more than 5%)

# UIS population data template

DEM - Questionnaire on national population data and metadata

Deadline for returning the completed questionnaire: 30 November 2022

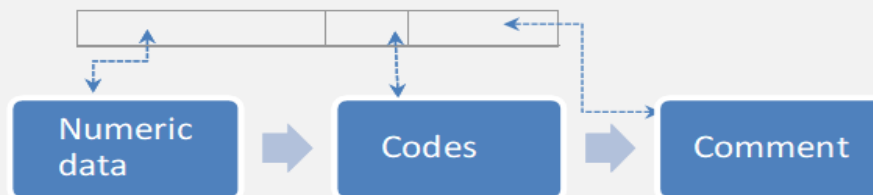
Please complete this questionnaire with metadata and the time series population data by age and sex for the period 2000-2022 and submit the data by email to the UIS at the following email address: [uis.survey@unesco.org](mailto:uis.survey@unesco.org).

In order to guaranty the inclusion of the data in the UIS March 2023 Data Refresh, it would be important to submit the data by the 30th of November 2022 at the latest. Population data reported after this deadline will be processed by the UIS in its future data releases.

Please note that for countries that would not provide their population data directly to the UIS, UIS will use the latest available United Nations Population Division population data estimates.

## Structure of data items

In order to ensure the provision of complete data and metadata, each data item is composed of three distinct cells which accept numeric data (including zeros to indicate nil or negligible data), missing data codes and comments, respectively. Countries are requested to make every effort to provide complete data in the numeric cell, if data are not available please use the appropriate codes described below. Please note that the Excel commenting feature has been disabled. Comments should be entered in the appropriate comment cell.



# UIS population data template

## DEM-Metadata: General information on the data collected in this questionnaire

Questionnaire code:	UIS_DEM_2022		
---------------------	--------------	--	--

Country:	Please select a country
----------	-------------------------

**1. Please select the reference year for the data provided in this questionnaire:**

Reference year:	Multiple years
-----------------	----------------

**2. Please provide information on the person(s) responsible for completing this questionnaire.**

Contact 1: Person in charge of completing the questionnaire:

Full name:	
Organization:	
Organization unit:	
Function:	
Email address:	
Phone number:	
Fax number:	

# UIS population data template

## DEM1: Total population by sex and age group

Country:	Please select a country	<input type="text"/>
Reference year:	2000	

	Males		Females		Total males and females	
<b>Total: All age groups</b>						
0 years						
1 years						
2 years						
3 years						
4 years						
5 years						
6 years						
7 years						
8 years						
9 years						
10 years						
11 years						
12 years						
13 years						
14 years						
15 years						
16 years						

## Metadata

### 1. Data source

Please select one of the following:

- Population census or register
- Sample survey
- Estimate (e.g. inter-censal, post-censal)
- Other (please specify)

### 2. Data availability

Are the reported data publicly available?

Please provide the specific web address of the data repository

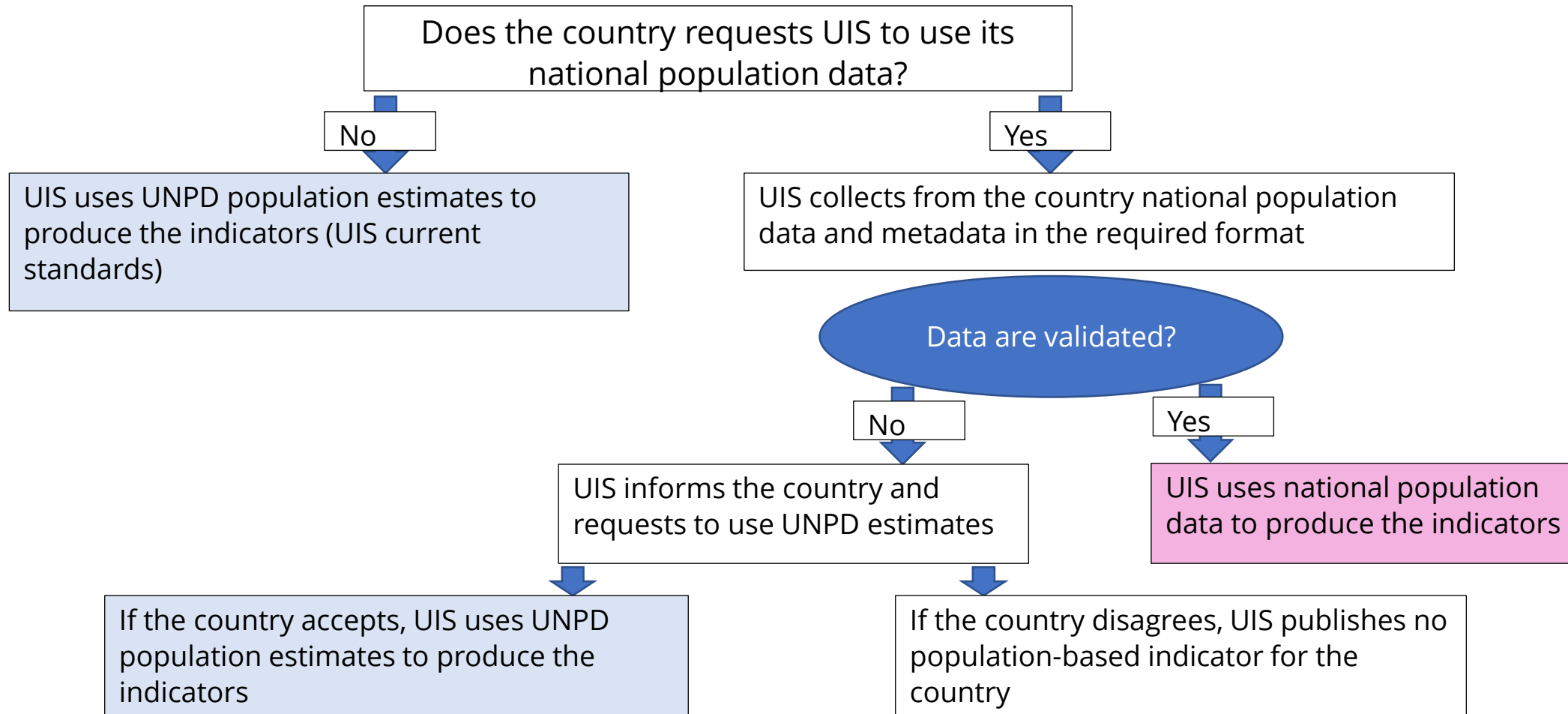
### 3. Coverage

#### a. Type of population count employed for the report

- Present population (de-facto)
- Usually resident population
- Registered population
- Other, please specify:



# Decision process on the use of population data to calculate indicators



# Decision points

- Do you approve this proposal, including the criteria for use of national population data in indicator calculation and the operational implementation process described in figure 1?  
[Yes/No]
- Do you approve the Excel template for reporting population data to UIS ? [Yes/No]
- It is countries responsibility to provide UIS with their population data that fully comply with the validation criteria. The UIS will not be able to extract by itself population data from countries or from regional publicly available sources. Do you approve this proposal?  
[Yes/No]

# Thank you

- Learn more: <http://uis.unesco.org/>

 @UNESCOstat